



# SOUTH WILLAMETTE Street Improvement Plan

## Community Forum #3:

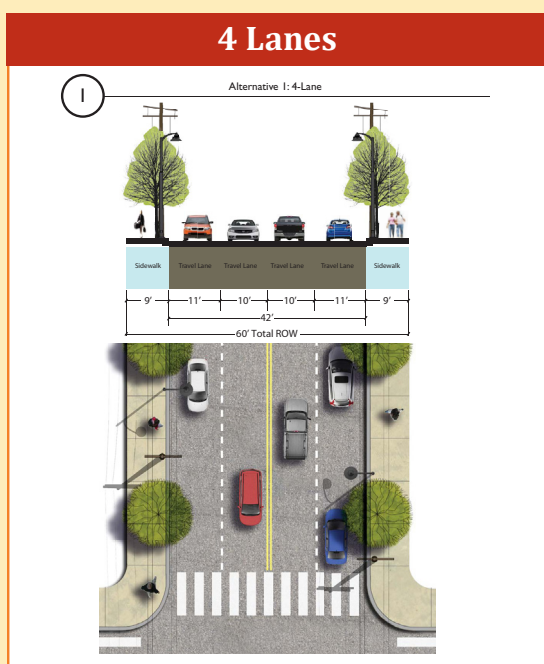
Tuesday, June 11

4-5:45 p.m. or 7-8:45 p.m.

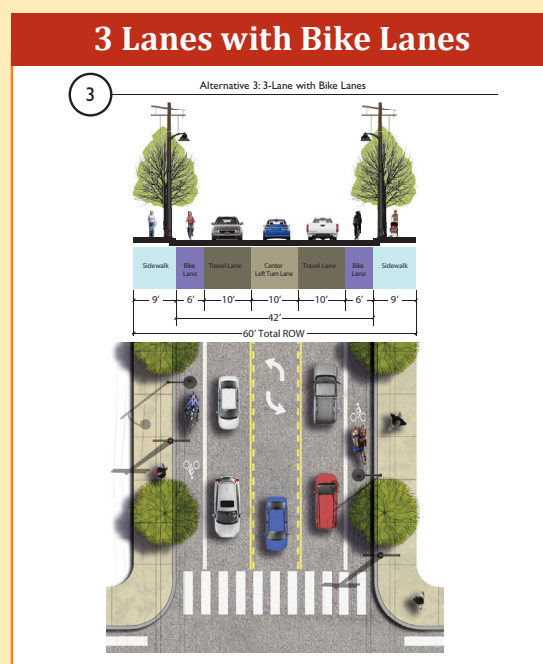
South Eugene High School Cafeteria: 400 E. 19th Ave.

## Rank & Refine the Alternatives

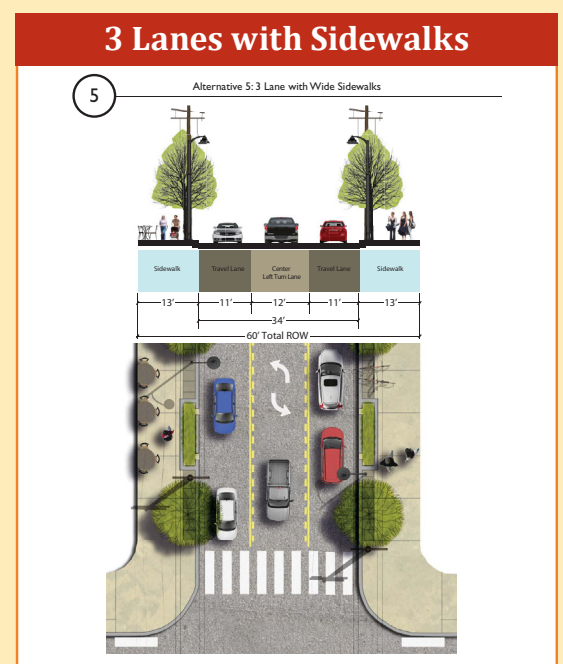
The City of Eugene is gathering input on three alternatives for redesigning Willamette Street from 24th to 32nd Avenue. The results will be shared with decision makers.



- Maintains existing 4 travel lanes
- Left-turning vehicles block travel lanes
- 9' sidewalks
- No bike lanes
- Maintains 11' outside travel lane for buses



- 3 travel lanes (southbound, northbound & center)
- 9' sidewalks
- Bike lanes
- 10' travel lanes are narrow for buses and trucks
- Center turn lane offers opportunities for design treatments
- Intersections and traffic signals would need to be reconfigured



- 3 travel lanes (southbound, northbound & center)
- 13' sidewalks
- Wide sidewalks provide design treatment options
- No bike lanes
- Maintains 11' outside travel lane
- Center turn lane offers opportunities for design treatments
- With reconstruction, utilities should be relocated for ADA compliance
- Intersections and traffic signals would need to be reconfigured

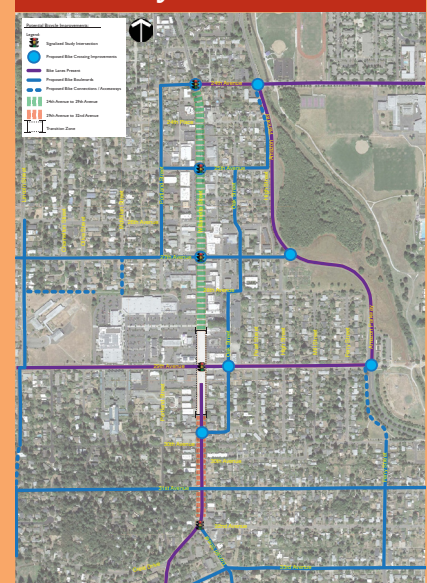
### Corridor Overview



- Design for continuity in transition area near 29th Ave
- Accommodate peak direction traffic: maintain two southbound through lanes from Woodfield Station to 32nd Ave

Bicycle routes are a key ingredient for future improvements. Bike routes parallel to South Willamette Street may be developed as a part of any of the alternatives.

### Bicycle Routes



# Alternative 1



# Alternative 3



# Alternative 5

