



CLIMATE & ENERGY
Eugene action plan 

Matt McRae

City of Eugene

Climate and Energy Analyst

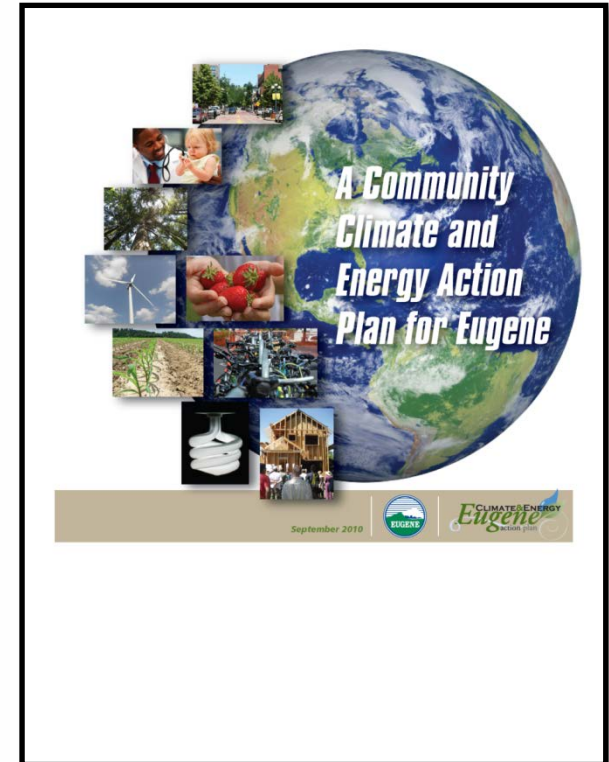
(541) 682-5649

matt.a.mcrae@ci.eugene.or.us

www.eugene-or.gov/sustainability

Outline

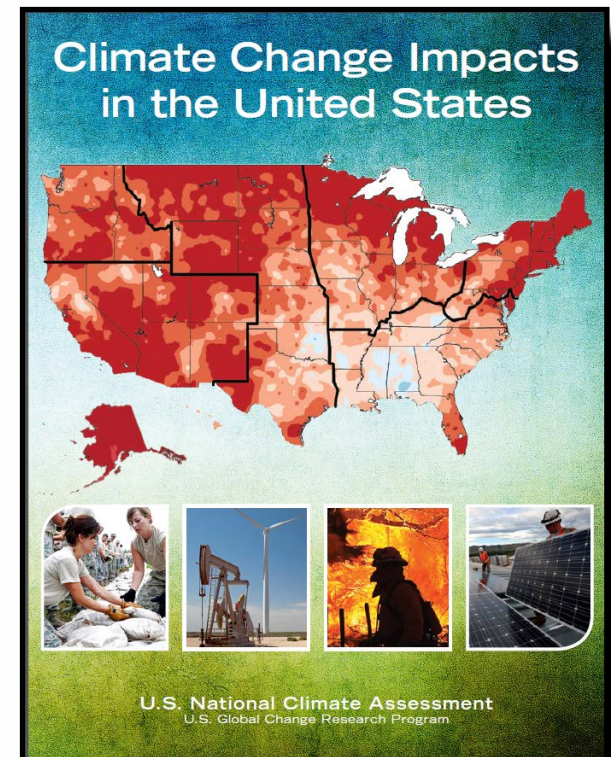
1. National Climate Assessment
2. Local Government Action
3. Climate Recovery Proposal



National Climate Assessment

May 2014

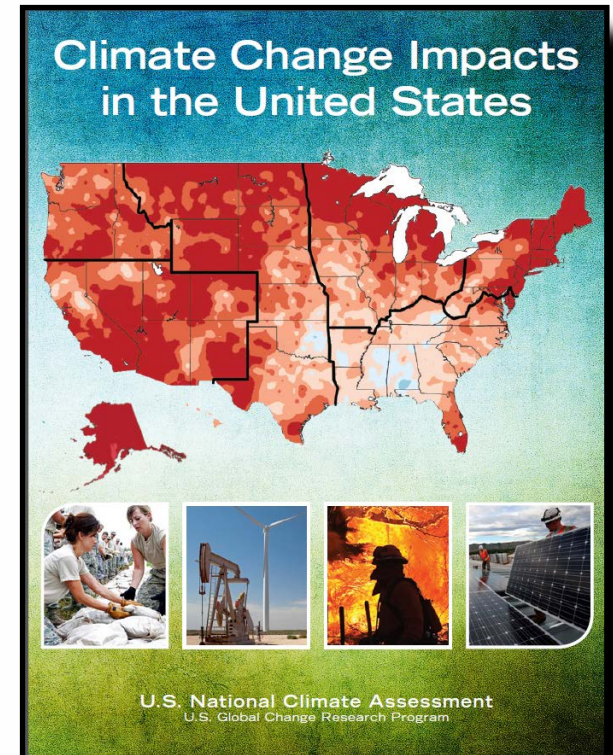
“Impacts related to climate change are already evident...and are expected to become increasingly disruptive...”



National Climate Assessment

May 2014

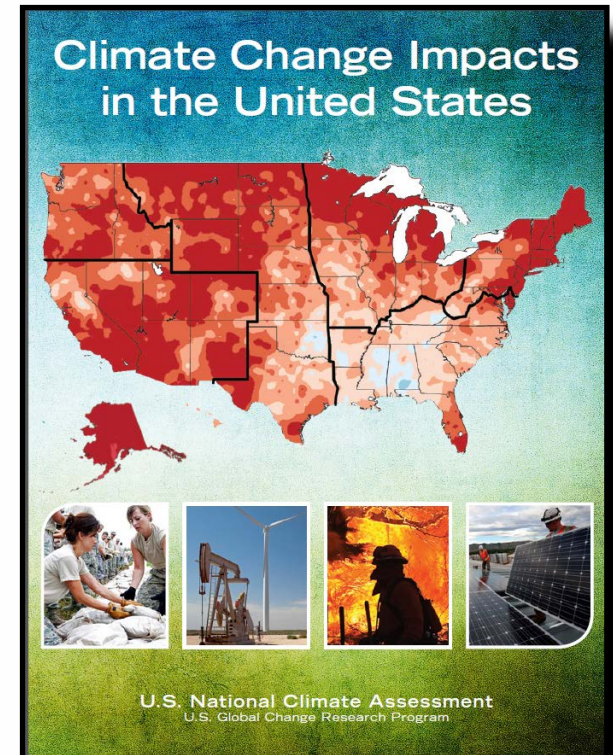
The warming of the past 50 years is primarily due to human activity.



National Climate Assessment

May 2014

Climate change threatens human health, infrastructure, water, agriculture, and natural ecosystems.

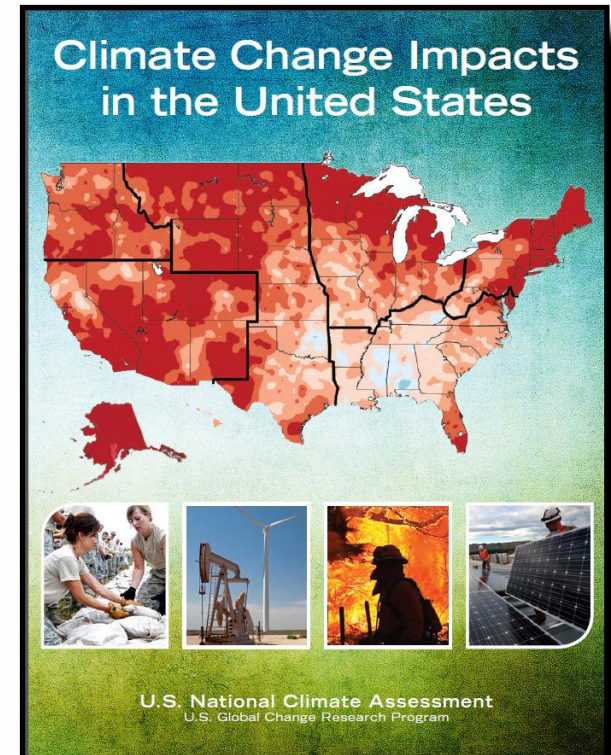


National Climate Assessment

May 2014

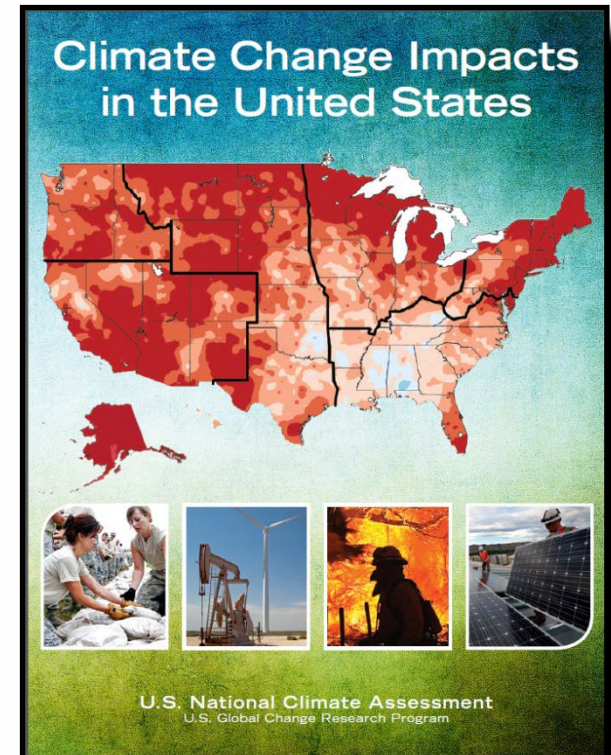
Planning to address climate change is becoming more widespread....

“...but current implementation efforts are insufficient to avoid increasingly negative social, environmental, and economic consequences.”



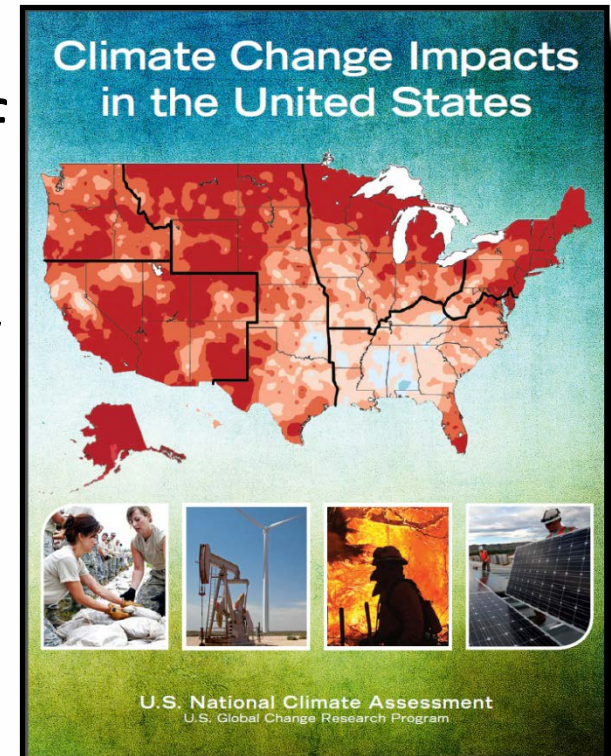
National Climate Assessment: Infrastructure

Urban infrastructure systems are heavily interdependent meaning climate-related disruptions in one system will almost always result in impacts to multiple systems.



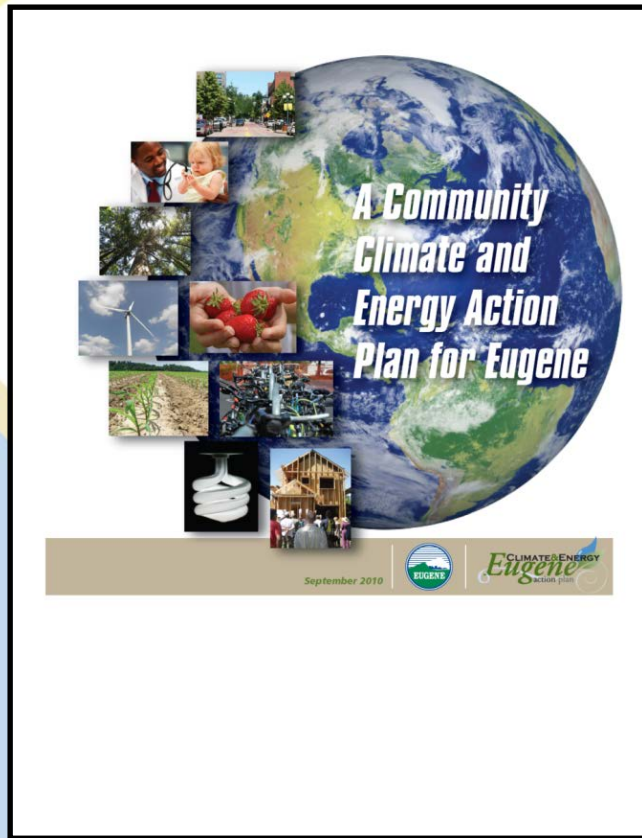
National Climate Assessment: Unequal Impacts

Climate-related vulnerability of urban residents and communities are influenced by pronounced social inequalities.

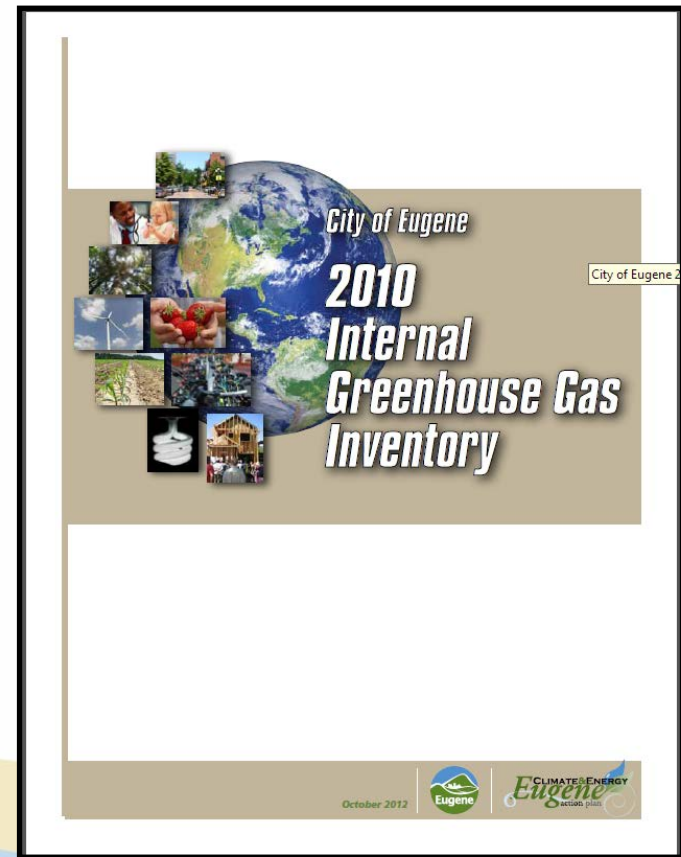


Eugene Takes Action

2010 Community Climate and Energy Action Plan



2009 Internal Climate Action Plan



Local Governments With Established Greenhouse Gas Targets

Homer, AK	Fremont, CA	San Anselmo, CA	Walnut Creek, CA
Flagstaff, AZ	Hayward, CA	San Carlos, CA	Yountville, CA
Tucson, AZ	Humboldt County, CA	San Diego, CA	Aspen, CO
Alameda, CA	Los Altos Hills, CA	San Francisco, CA	Boulder, CO
Albany, CA	Los Angeles, CA	San Jose, CA	Carbondale, CO
American Canyon, CA	Marin County, CA	San Leandro, CA	Denver, CO
Arcata, CA	Napa County, CA	San Luis Obispo, CA	Fort Collins, CO
Benicia, CA	Napa, CA	San Rafael, CA	Gunnison County, CO
Berkeley, CA	Novato, CA	San Ramon, CA	La Plata County, CO
Calistoga, CA	Oakland, CA	Santa Cruz, CA	Bridgeport, CT
Chula Vista, CA	Palo Alto, CA	Santa Monica, CA	Hamden, CT
East Palo Alto, CA	Piedmont, CA	Sonoma City, CA	Hartford, CT
El Cerrito, CA	Pittsburg, CA	Sonoma County, CA	New Haven, CT
Emeryville, CA	Richmond, CA	Tracy, CA	Stamford, CT
	Sacramento County, CA	Union City, CA	Broward County, FL
	Sacramento, CA	Vallejo, CA	Collier County, FL
	Saint Helena, CA		

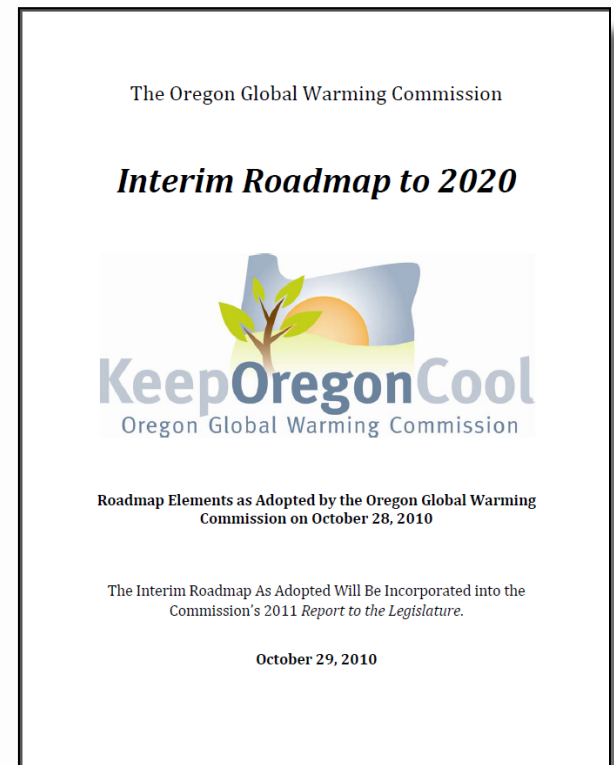
Source: ICLEI 2011 annual report

Local Governments With Adopted Greenhouse Gas Targets

Key West, FL	Williamstown, MA	Galloway, NJ	Pittsburgh, PA
Miami, FL	Worcester, MA	Hamilton, NJ	Upper Dublin, PA
Miami-Dade County, FL	Annapolis, MD	Maplewood, NJ	Charleston, SC
Tallahassee, FL	Baltimore, MD	Albuquerque, NM	Chattanooga, TN
Atlanta, GA	Chevy Chase, MD	Las Vegas, NV	Franklin, TN
Blaine County, ID	Montgomery County, MD	Bedford, NY	Knoxville, TN
Chicago, IL	Queen Anne's County, MD	Dobbs Ferry, NY	Nashville, TN
Mission, KS	Takoma Park, MD	New Castle, NY	Oak Ridge, TN
Amherst, MA	Bath, ME	New York, NY	Austin, TX
Belmont, MA	Falmouth, ME	Tompkins County, NY	Dallas, TX
Boston, MA	Ann Arbor, MI	Westchester County, NY	Grapevine, TX
Brookline, MA	Grand Traverse County, MI	Akron, OH	Park City, UT
Cambridge, MA	Minneapolis, MN	Cincinnati, OH	Alexandria, VA
Falmouth, MA	Northfield, MN	Eugene, OR	Arlington County, VA
Medford, MA	Columbia, MO	Portland, OR	Blacksburg, VA
Nantucket, MA	Creve Coeur, MO	Cranberry Township, PA	Charlottesville, VA
Newton, MA	Kansas City, MO	Haverford, PA	Loudoun County, VA
Northampton, MA	Winston-Salem, NC	Montgomery County, PA	Roanoke County, VA
Somerville, MA	Keene, NH	Philadelphia, PA	Roanoke, VA

Oregon Greenhouse Gas Targets

- Arrest emissions by 2010
- 10% below 1990 levels by 2020
- 75% below 1990 levels by 2050





Eugene Climate Recovery Proposal

1. Establish and Clarify Goals

By 2020, all City-owned facilities and City operations shall be carbon neutral.

By 2030, the City organization shall reduce its use of fossil fuels by 50%.

By 2030, collectively reduce the combined use of fossil fuels by 50%.



Eugene Climate Recovery Proposal

1. Establish and Clarify Goals

Complete an assessment of current efforts to reach those goals.

2. Assess Current Efforts

Establish numerical targets and benchmarks for achieving the required reductions.

Propose options for meeting the goals and provide a triple bottom line assessment of the options including a cost-benefit analysis.



Eugene Climate Recovery Proposal

1. Establish and Clarify Goals

2. Assess Current Efforts

**3. Develop A Science-Based Community
Greenhouse Gas Reduction Goal**

The City Manager shall present a greenhouse gas emission target consistent with achieving 350 parts per million of atmospheric CO₂



Eugene Climate Recovery Proposal

1. Establish and Clarify Goals
2. Assess Current Efforts
3. Develop A Science-Based Community Greenhouse Gas Reduction Goal
- 4. Report Progress**

The City Manager shall report to City Council on progress in reaching adopted climate action goals



Eugene Climate Recovery Proposal

1. Establish and Clarify Goals

2. Assess Current Efforts

3. Develop A Science-Based Community Greenhouse Gas Reduction Goal

4. Report Progress

5. Readjust if necessary

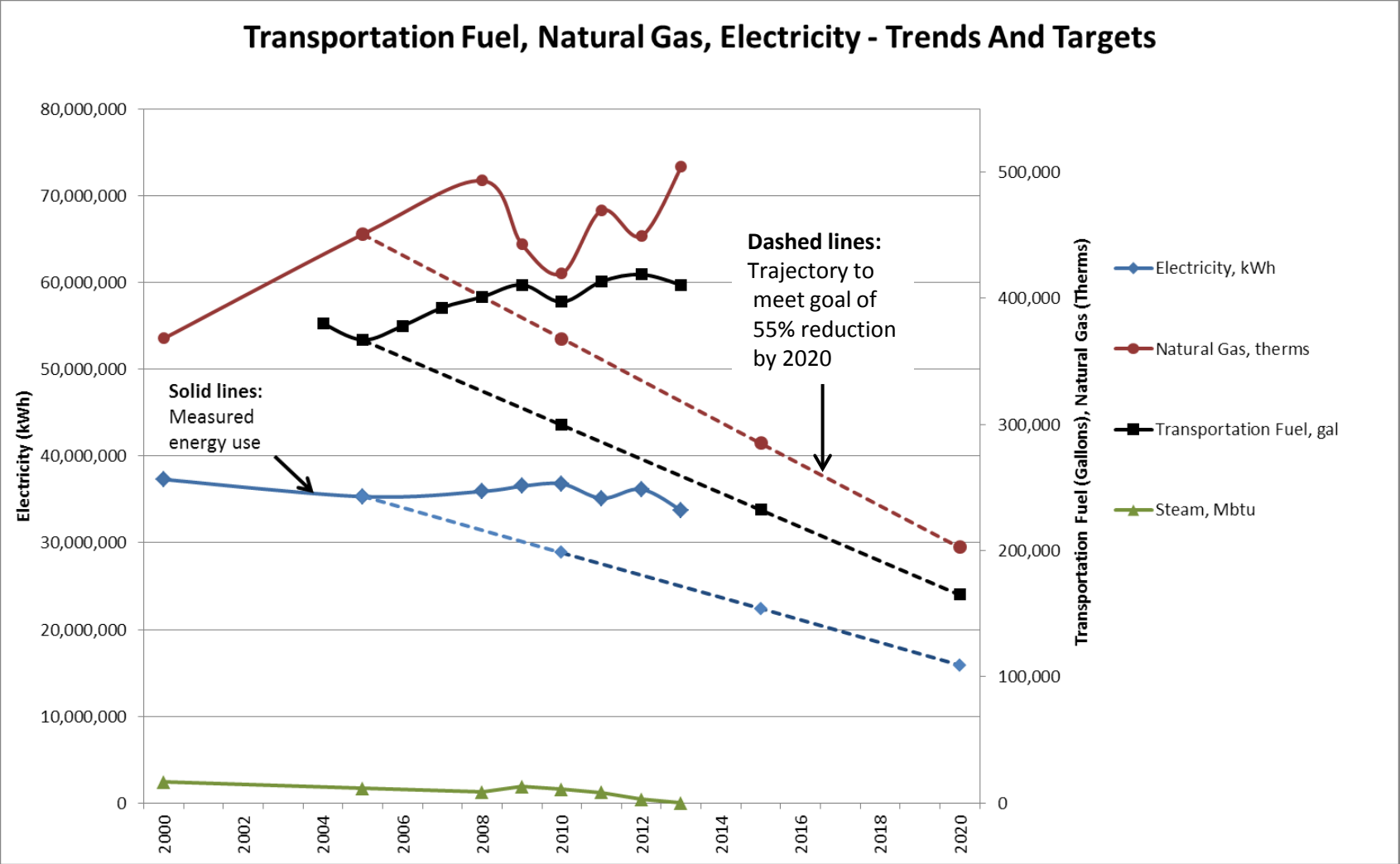
If the 5-year comprehensive assessment indicates that the City is not reaching the adopted targets:

Conduct an analysis of possible actions to get back on track

Bring revisions to Council

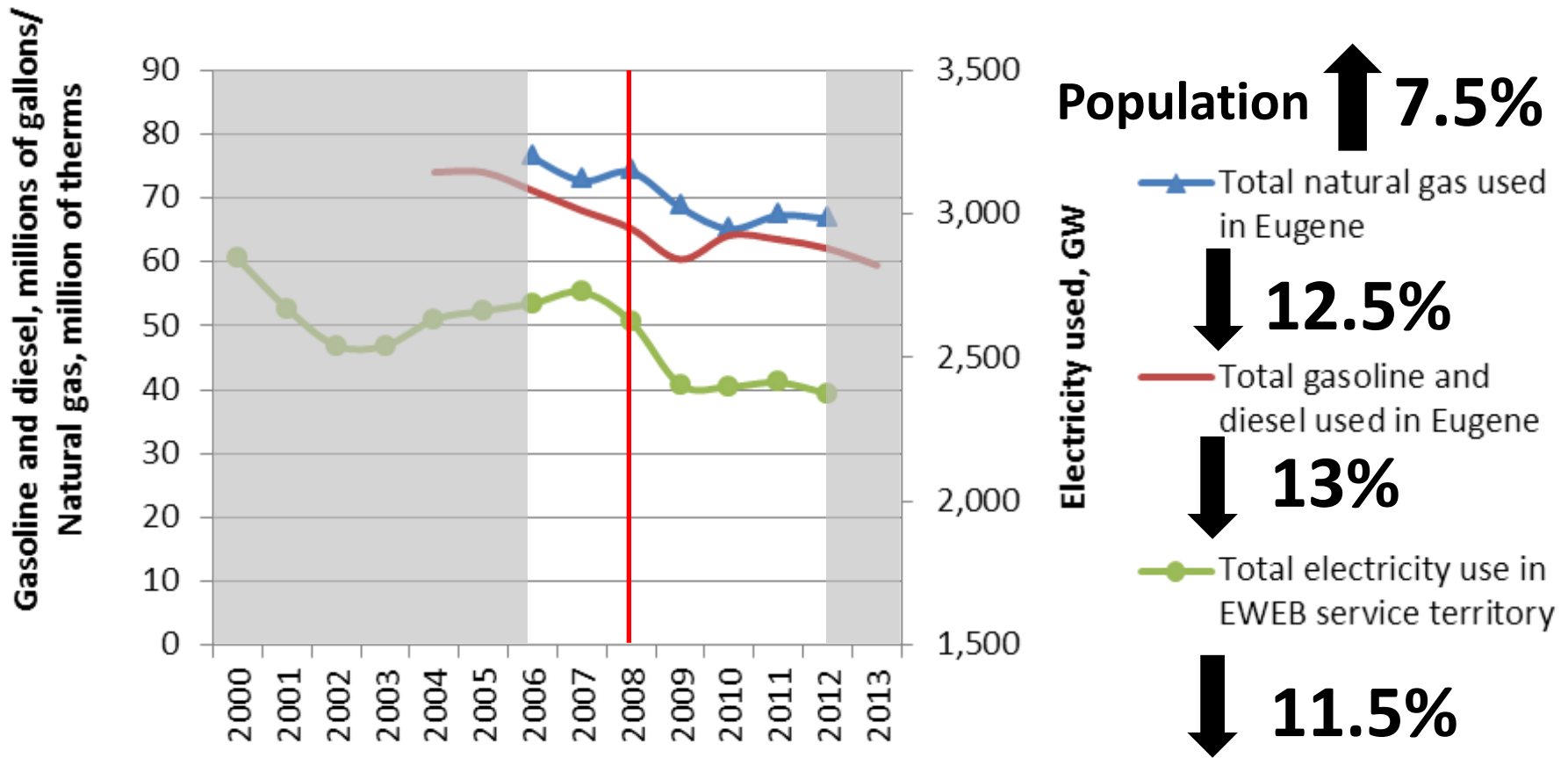
Matt McRae
City of Eugene Office of Sustainability
Climate and Energy Analyst
(541) 682-5649
matt.a.mcrae@ci.eugene.or.us
www.eugene-or.gov/sustainability

City of Eugene Internal Energy Use



Community Energy Use Trends

Select measures of energy use in Eugene, Oregon

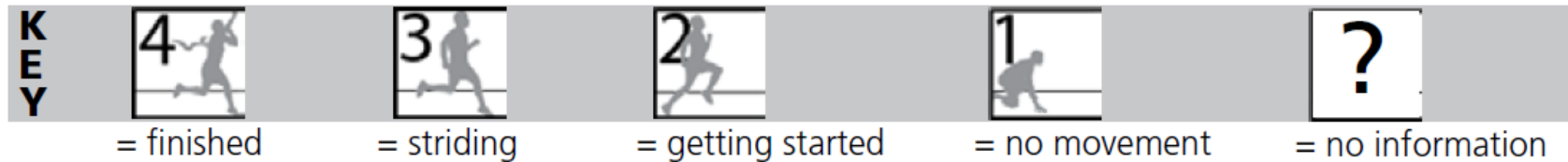


Community Climate and Energy Action Plan

Action by action progress

STRATEGY SCORECARD

A snapshot of strategies finished, striding, getting started and no movement.



	Strategies finished	Strategies in stride	Strategies getting started	Strategies with no movement
2011 TOTALS	= 3	= 23	= 53	= 25
2012 TOTALS	= 11	= 36	= 28	= 13



Public Attitudes

77% = climate change is happening and it's manmade

75% = climate change requires much stronger regulation of GHGs

81% = climate change requires us to entirely rethink our behavior

74% = individual action can make a difference



Comparison: Greenhouse Gas Emissions Reduction Targets

Eugene Greenhouse Gas Emissions Reduction Targets

