

State of Parks and Recreation 2014

Parks and Open Space Division (PW) and Recreation Division (LRCS)



October 2014

Parks and Recreation 2010 Council Work Session

- **Council Motion: Request the City Manager to develop funding options for City Council FY12 Budget consideration to sustainably maintain current Park, Recreation and Open Space Facilities.**

Today's Presentation

- A brief look back at key moments in the history of Parks and Recreation
- Update of Recreation Division since 2010
- Update of parks and Open Space Division since 2010
- Conclusion
- Council Q & A



Key Moments in Parks and Recreation History

1906 – Hendricks Park





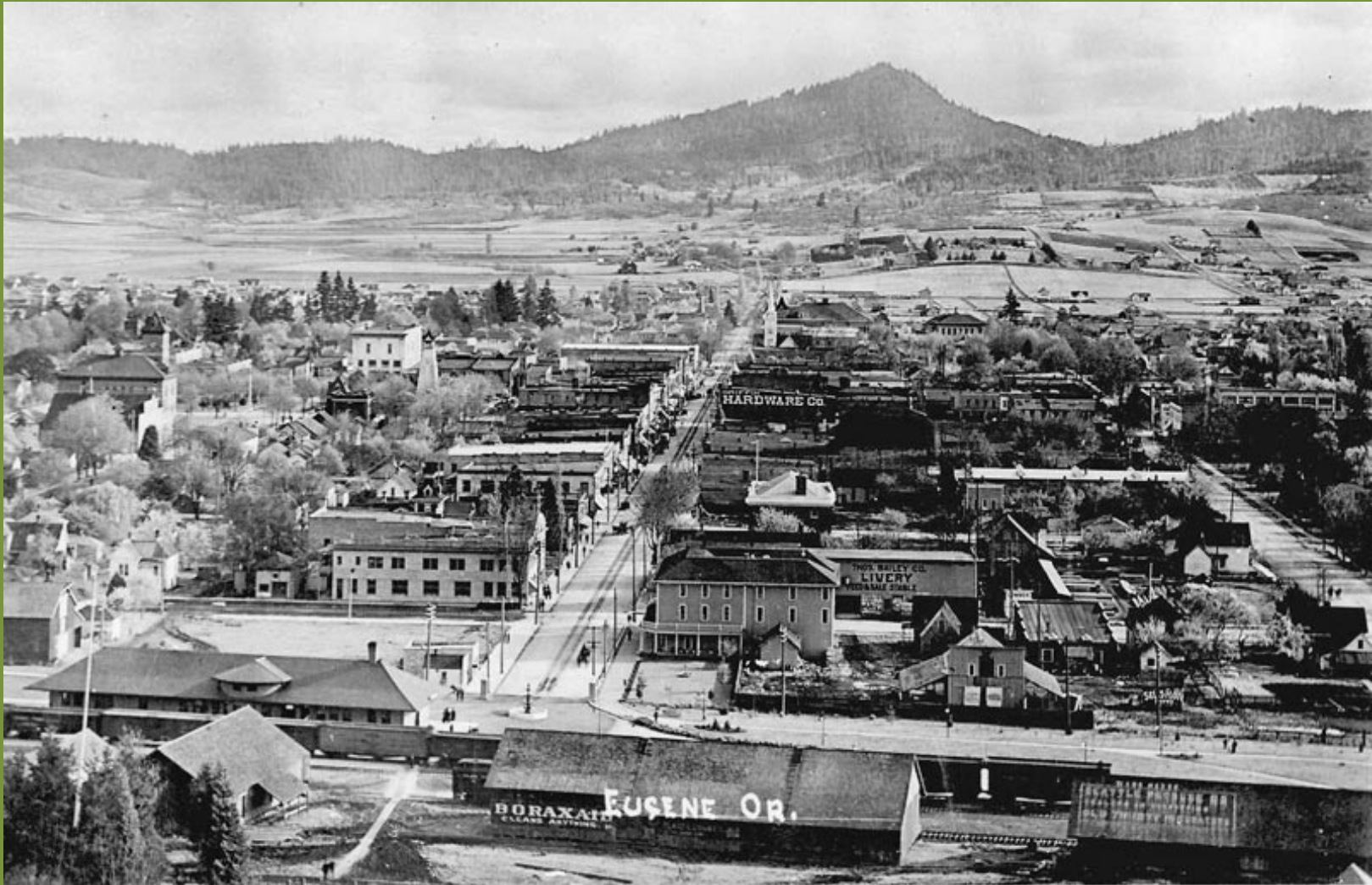
1914 - Skinner Butte Park Dedicated

1927

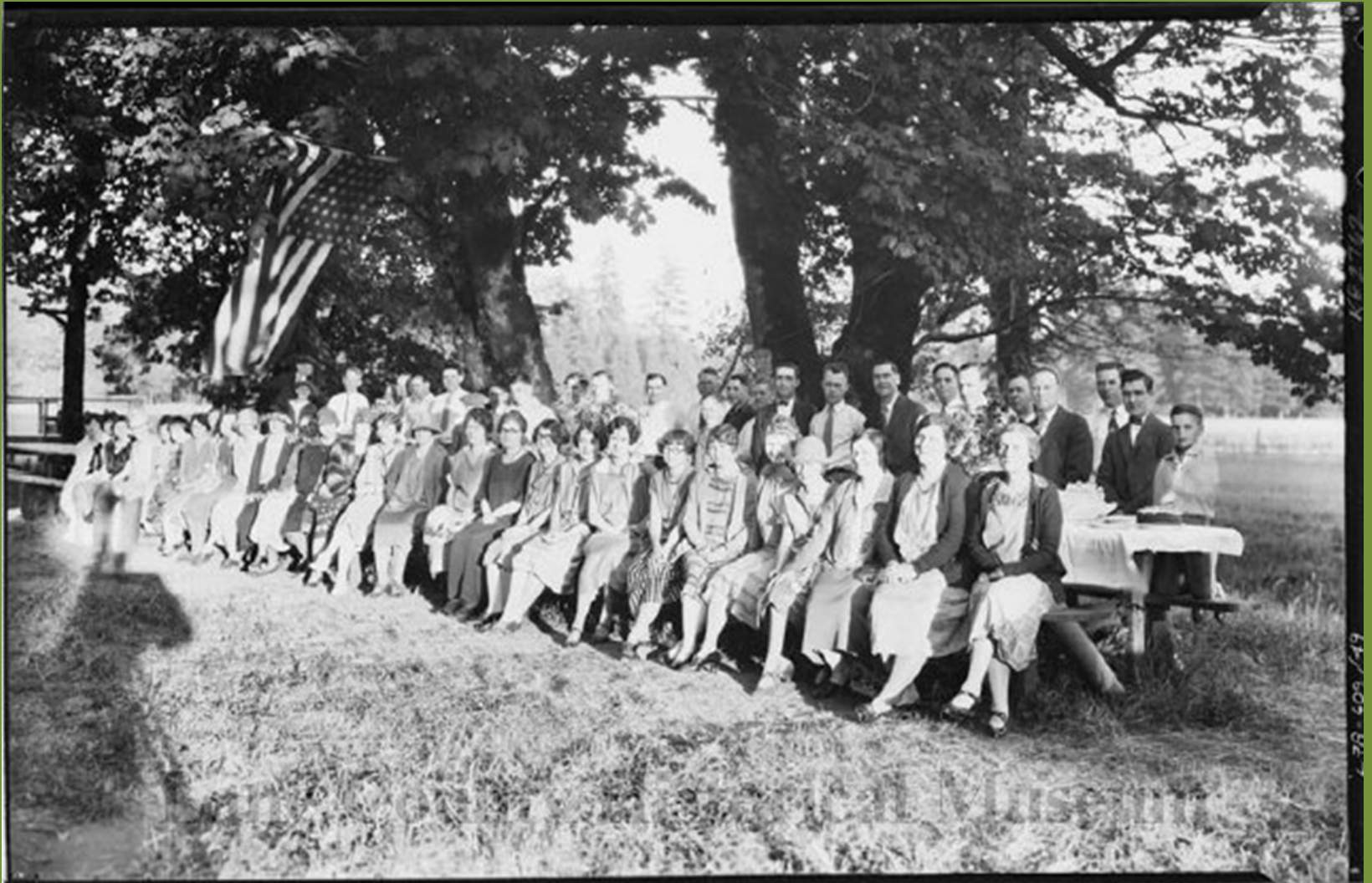
**Public Recreation and Playground Fund
Creation of Playground Commission**



1930s – Saving Spencer's Butte



1940s – The Joining of Parks and Recreation



1947 – The First Community Center



Lane County Historical Museum

1948 – The First Swimming Pool



Lane County Historical Museum

1950

1950s – Exploding Population and Post War Prosperity

- 1950 – William Riley “Tex” Matsler
- 1951 -Land donated and Owen Rose Garden was created.
- 1954 – Hendricks Park dedicated as a rhododendron garden



1960s – Betty Nevin Takes the Lead



Washburne Park

Golden Era!

- 1966 Campbell CC
- 1967 Westmoreland CC
- 1968 Sheldon CC and
Sheldon Pool
- 1969 Echo Hollow Pool
- 1972 River House (1920)
- 1973 Amazon CC
- 1976 Petersen Barn (1933)

***1969 Gold Medal Award**



1970s - Ridgeline Trail - Matsler to Ed Smith



Ruth Bascom Keeps Things Rolling into the 80s



1990s Overcoming Barriers and Making Changes



2000s – Planning for the Future



2014 - WJ Skatepark & Urban Plaza



Recreation Summary



Recreation - Value to the Community

- Connecting people
- Connecting resources
- Creating a safer community
- Healthy people
- Quality of life
- Economic prosperity



Recreation Trends and Challenges

- Aging community -
- Health and fitness – obesity crisis for all ages
- Out of school time / Affordable childcare
- Nature deficit
- Inclusion demands
- Wounded veterans
- Partnerships
- Aging facilities



Greatest Challenge in Recreation since 2010: Balancing Accessibility and Cost Recovery



Recreation Resources – FY15 Budget

- **GF Budget** **\$9.3M**
- **Staff (53/500)** **\$6.2M**
- **Staff** **66%**
- **Facility Maint.** **\$1.9M**
- **Facility Maint.** **21%**
- **Revenue Target** **\$2.9M**
 (\$520K increase)
- **Cost Recovery** **32%**



Community Centers and Pools

Deferred Maintenance

- 6 Community Centers
- 3 Pools
- 6 Special Use Facilities
- FCI Rating = Fair
- Def. Maint.= \$7.2M



Since 2010 – Sheldon and Echo Hollow Pools: \$2.9M in Major Maintenance



Aging Facilities – The golden era of yesterday, meeting the needs of today?



Aging Facilities

- **Washington Park** 1947
- **Campbell CC** 1966
- **Westmoreland CC** 1967
- **Sheldon CC & Pool** 1968
- **Echo Hollow Pool** 1969
- **River House (1920)** 1972
- **Amazon CC** 1973
- **Petersen Barn (1931)** 1976
- **Hilyard CC** 1990
- **Amazon Pool Remodel (1957)** 2001

- **(SMJ House, Kaufman House, Morse Farm, Lamb Cottage)**

Success of Investing in Facilities – Amazon Pool



Recreation Facility Needs - 2006 PROS Comp Plan



2006 PROS Comp Plan - Regional Gaps







State of Eugene's Parks and Natural Areas



People want access to nature and recreational opportunities





Tangible Benefits of Parks

Add economic value

Enable healthy living

Spaces for people to engage

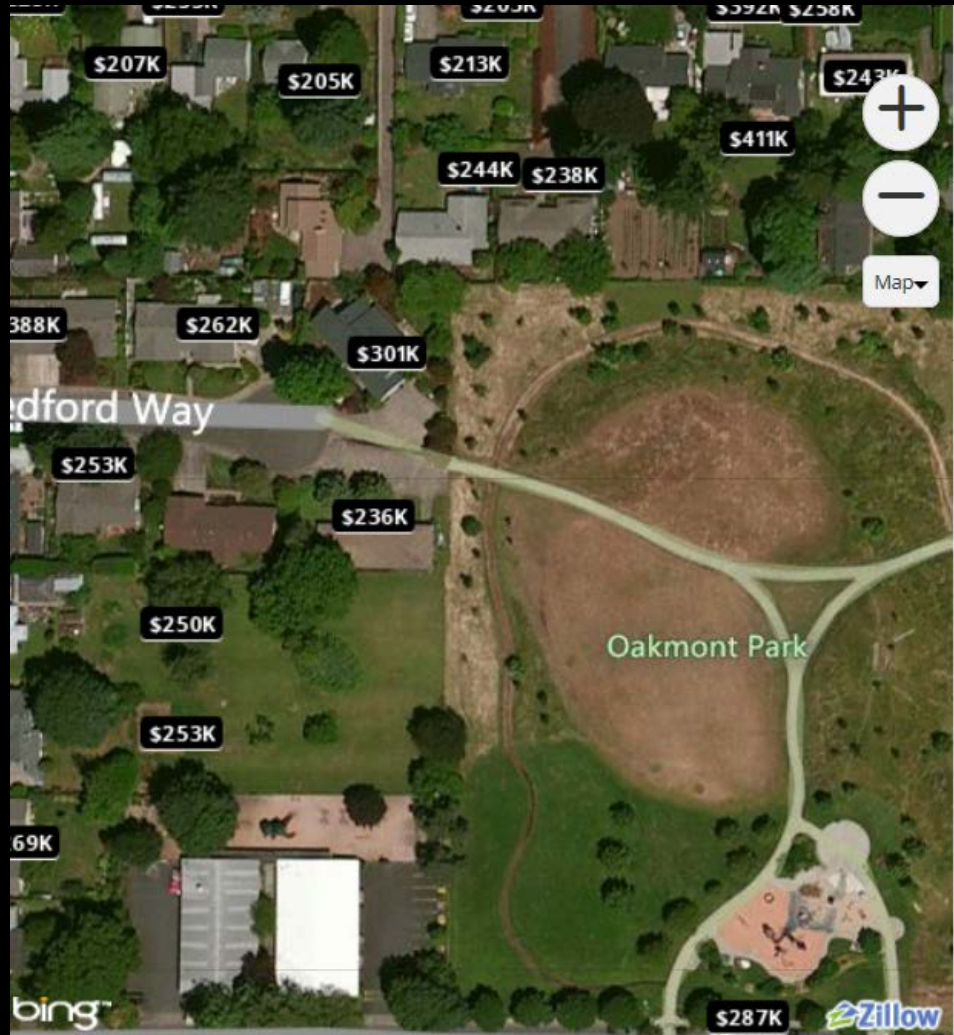
Clean our air and water

MEASURING THE ECONOMIC
VALUE *of a* CITY PARK SYSTEM



THE TRUST *for* PUBLIC LAND
CONSERVING LAND FOR PEOPLE

Add Economic Value



Parks have a positive effect on property values

People want to live near parks



Parks stimulate tourism

3.5 million Lane County Tourists in 2013





Art and the Vineyard



THE WORLD'S COOLEST GEAR
27 GAME-CHANGING TOOLS + TOYS

Outside

BEST TOWNS

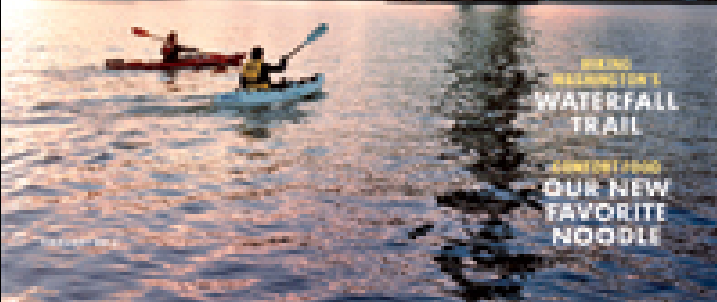


FRESH TRICKS FOR OLD HOUSES...

Sunset

the
**West's
2014 Best
Places
to Live**

Want to
WANT OUT,
STEP BACK,
LAUNCH
A BUSINESS,
BUY A HOUSE
A TRAVEL GUIDE
P. 102



BEHOLD
WALKING TO
WATERFALL
TRAIL

WANT OUT
OUR NEW
FAVORITE
NOODLE



16 PERFECT PLACES TO MOVE NOW

SPECIAL REPORT
**TAKE YOUR
KIDS OUT OF
SCHOOLS**
Why Adventure
Is the Future of
Education

THE TOP CREDIT CARDS TODAY

Money

BIG CITIES,
BIG VALUES



America's Best Places to Live

50 GREAT
SMALL
CITIES
THAT
HAVE
IT ALL

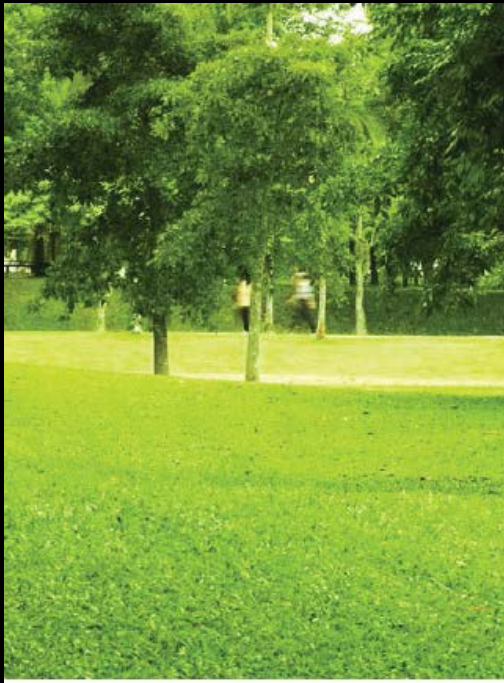


Pick
PICK THE RIGHT
HEALTH PLAN
FOR YOU

ACE YOUR NEXT
JOB INTERVIEW

Enable Healthy Living





Parks Build Healthy Communities: **SUCCESS STORIES**





Access to parks and natural areas relieves stress, depression, and have other health benefits.

Spaces for People





Have fun together



Nearby Nature at Alton Baker Park

Kids learn better from nature



Build a sense of community

Clean Our Water

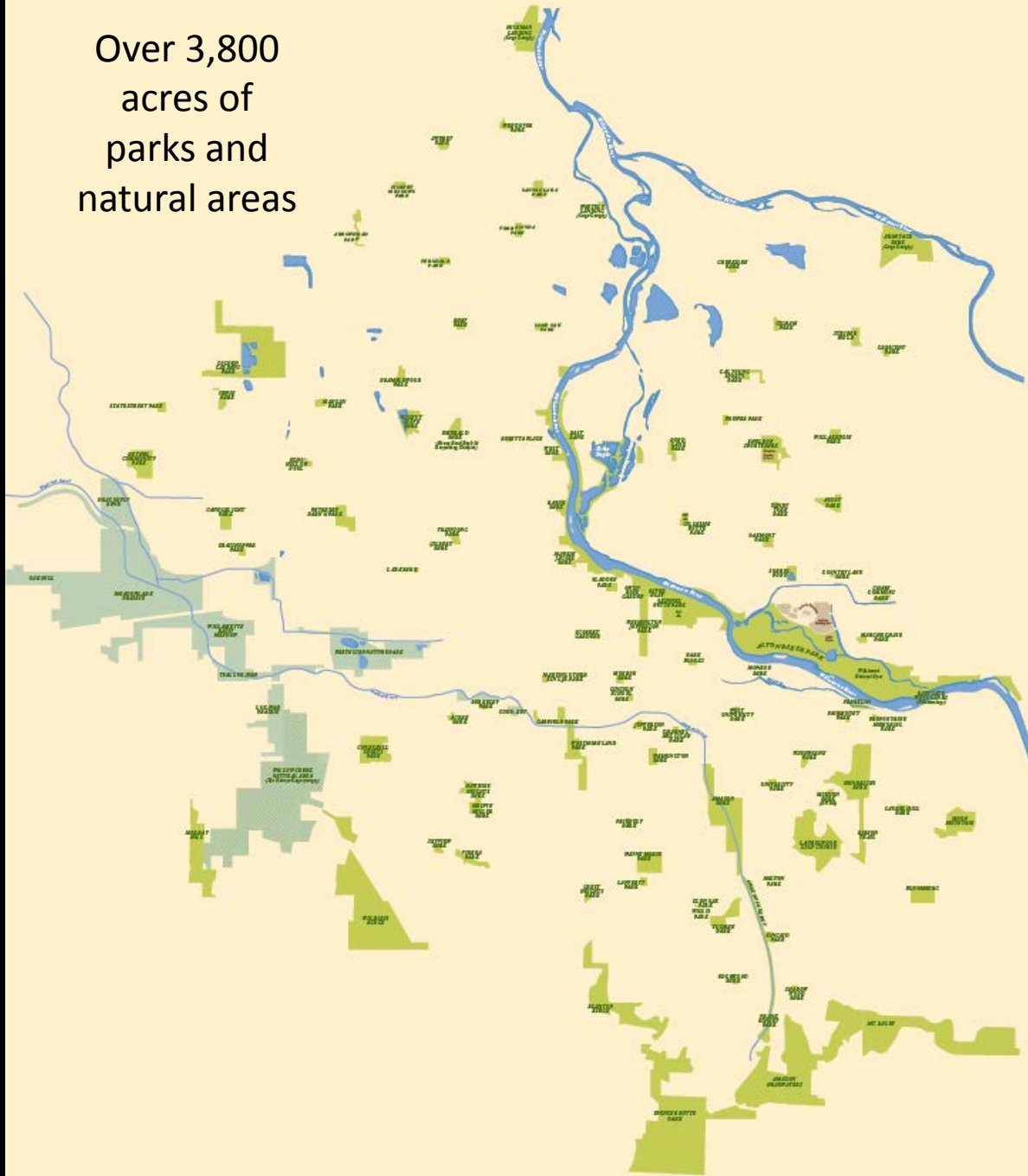


Clean Our Air Keep Eugene Cool



Over 3,800
acres of
parks and
natural areas

Large and Diverse
System





46

Neighborhood Parks



13

Community Parks



46 Sports Fields



53 Miles of Trails

A wide-angle photograph of a lush green meadow filled with numerous bright yellow buttercup flowers. The field extends to a line of trees in the background, including deciduous trees and a dense stand of evergreens. The sky is clear and blue. The text "Over 2,500 Acres of Natural Areas" is overlaid in the upper right corner.

Over 2,500 Acres of
Natural Areas



30 Areas of Street Medians

65 Green Stormwater Facilities

50,000 Public Street Trees



Dedicated staff passionate about parks



New Dillard Connector Trail

Challenges

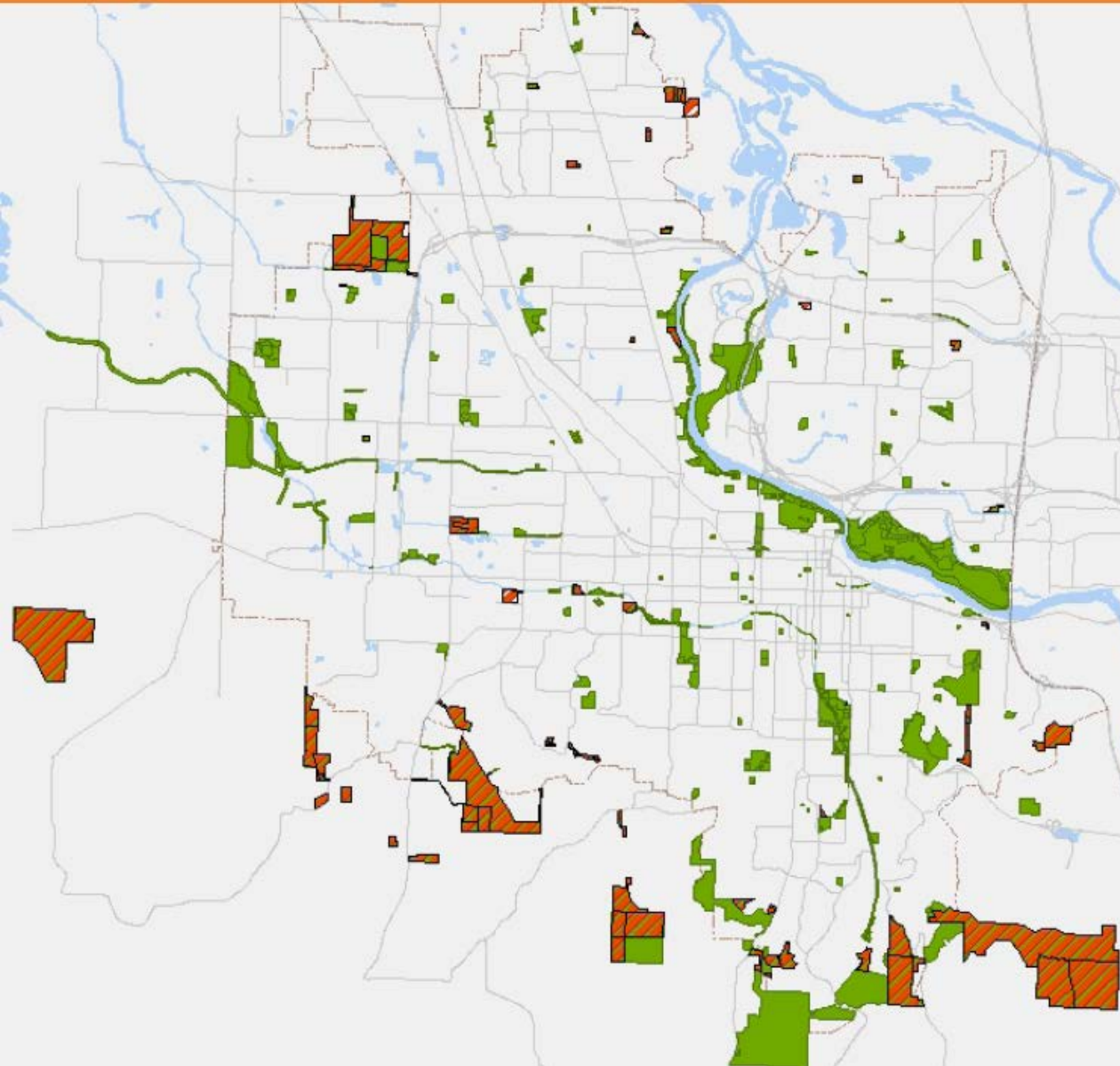
System expansion - maintenance funding has not kept pace

Aging infrastructure - deferred maintenance

Increasing costs due to illicit uses

Eugene Park System 1997

Property Acquisitions Since 1998



Expansion Since 1998

18 new neighborhood parks

10 future neighborhood parks

Future community park site

1 new regional playground

Bethel Community Park site

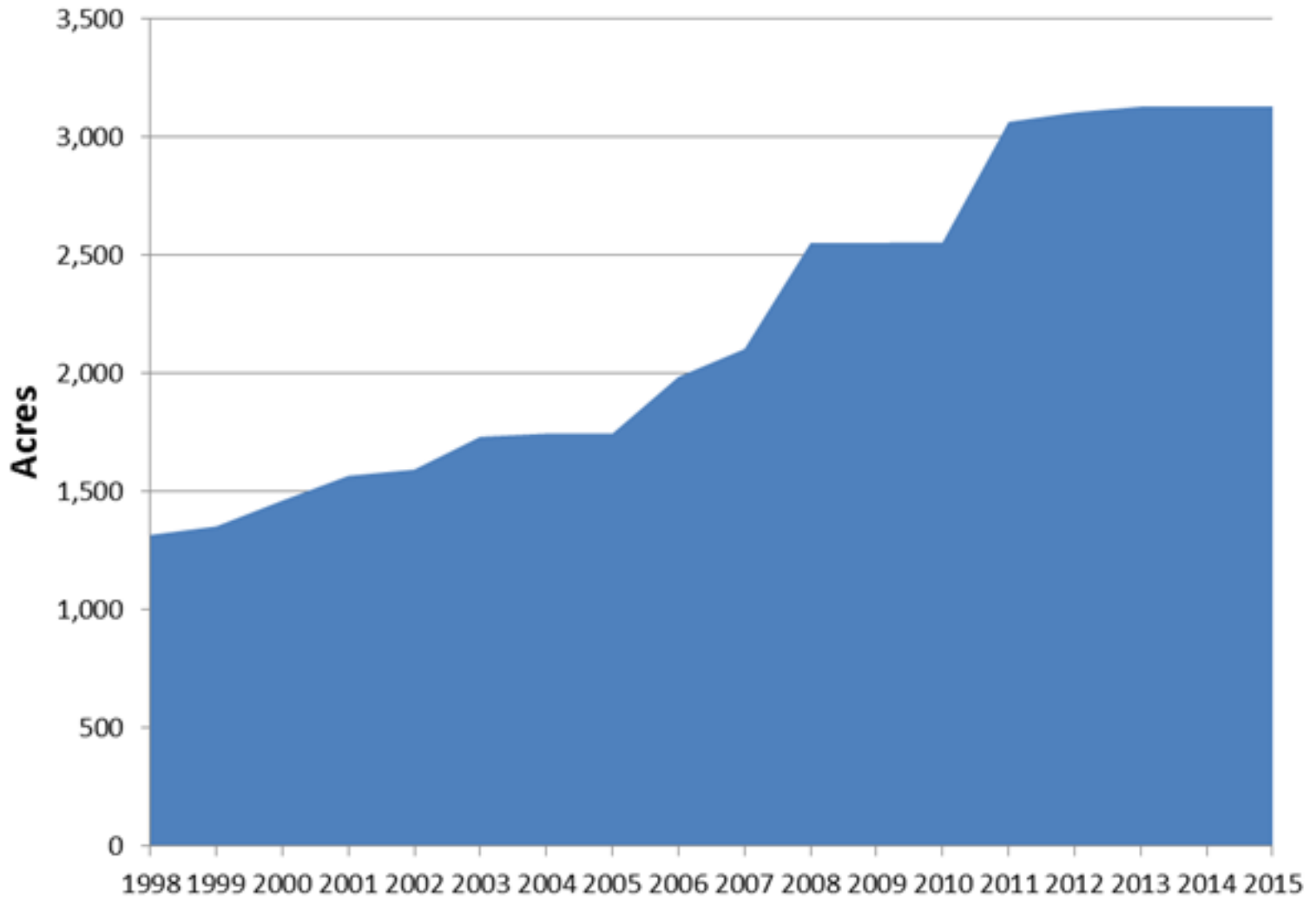
1,260 acres of natural areas

2.7 miles of trails

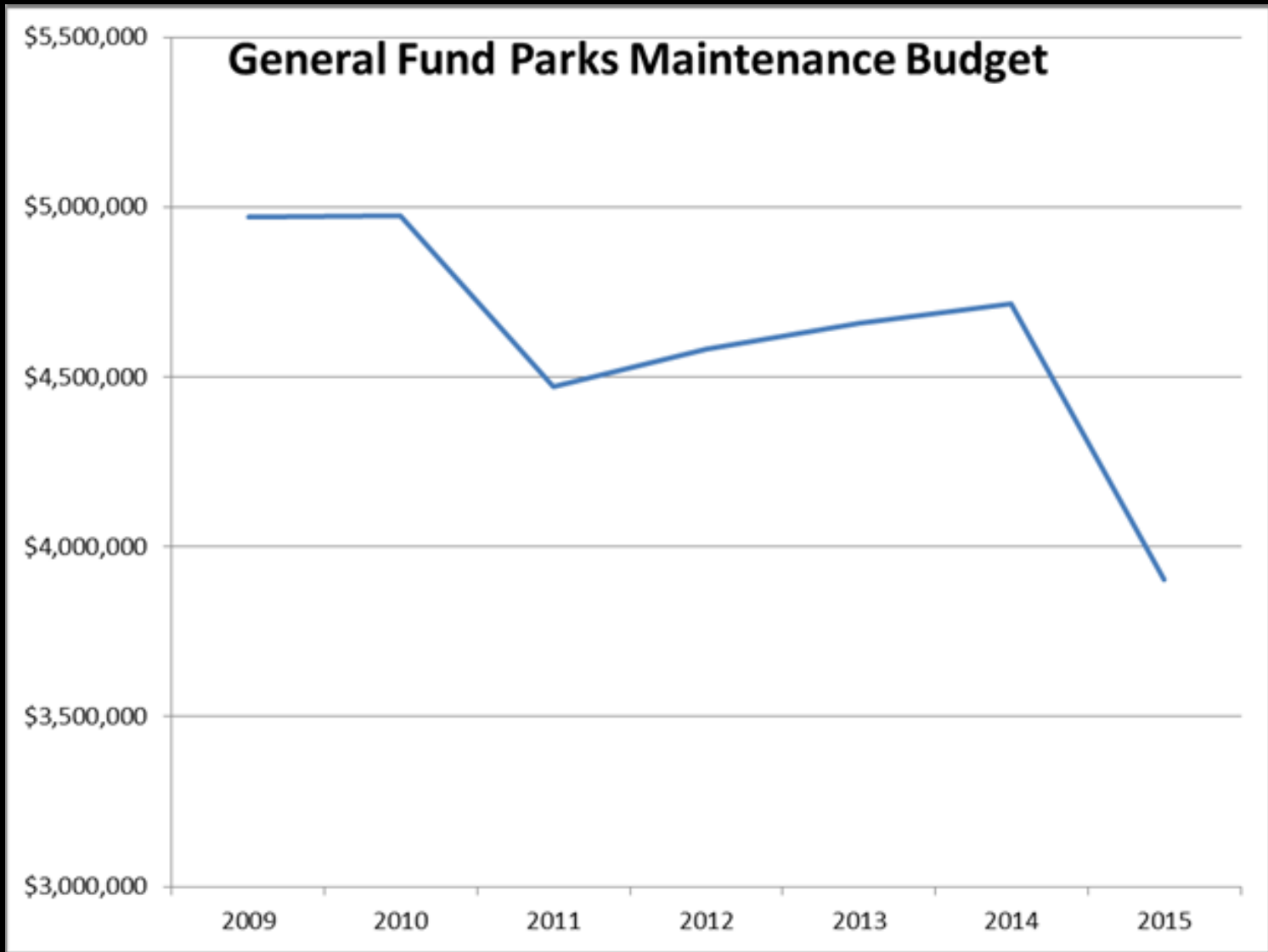
1 new sports field

4 synthetic turf fields

Growth in the Park System



Acres increase for parks maintained with general funds



\$1.2 million reduction in general funds



Less staff and equipment than in 1998

MEN

**RESTROOM
CLOSED**
due to budget cuts.

Please use the restroom located
at Sheldon Community Center.



Reductions in service levels

3 closed restrooms

25% reduction in mowing frequency

75% reduction in turf irrigation in neighborhood parks



25% reduction in trash pickup
Cut nuisance vegetation program
Less tree maintenance



02/12/2014



02/18/2014 14:22



Ferndale Park

Postpone building of new parks

Aging Infrastructure and Deferred Maintenance



Asset Deterioration Over Time



Deferred Capital Maintenance



Hardscapes
Lighting
Restrooms
Playground equipment

Increasing illicit activities





Graffiti and vandalism



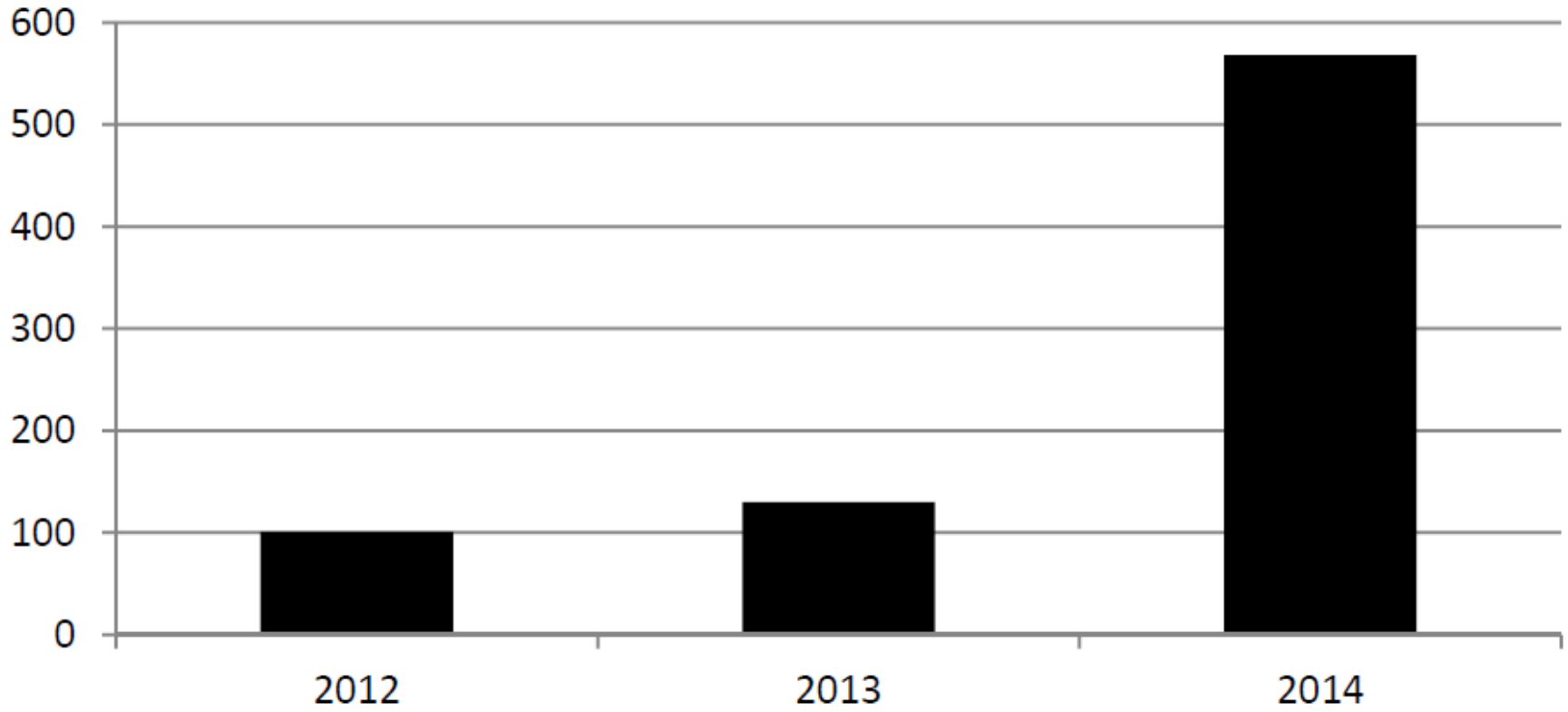


Trash and debris from illegal dumping

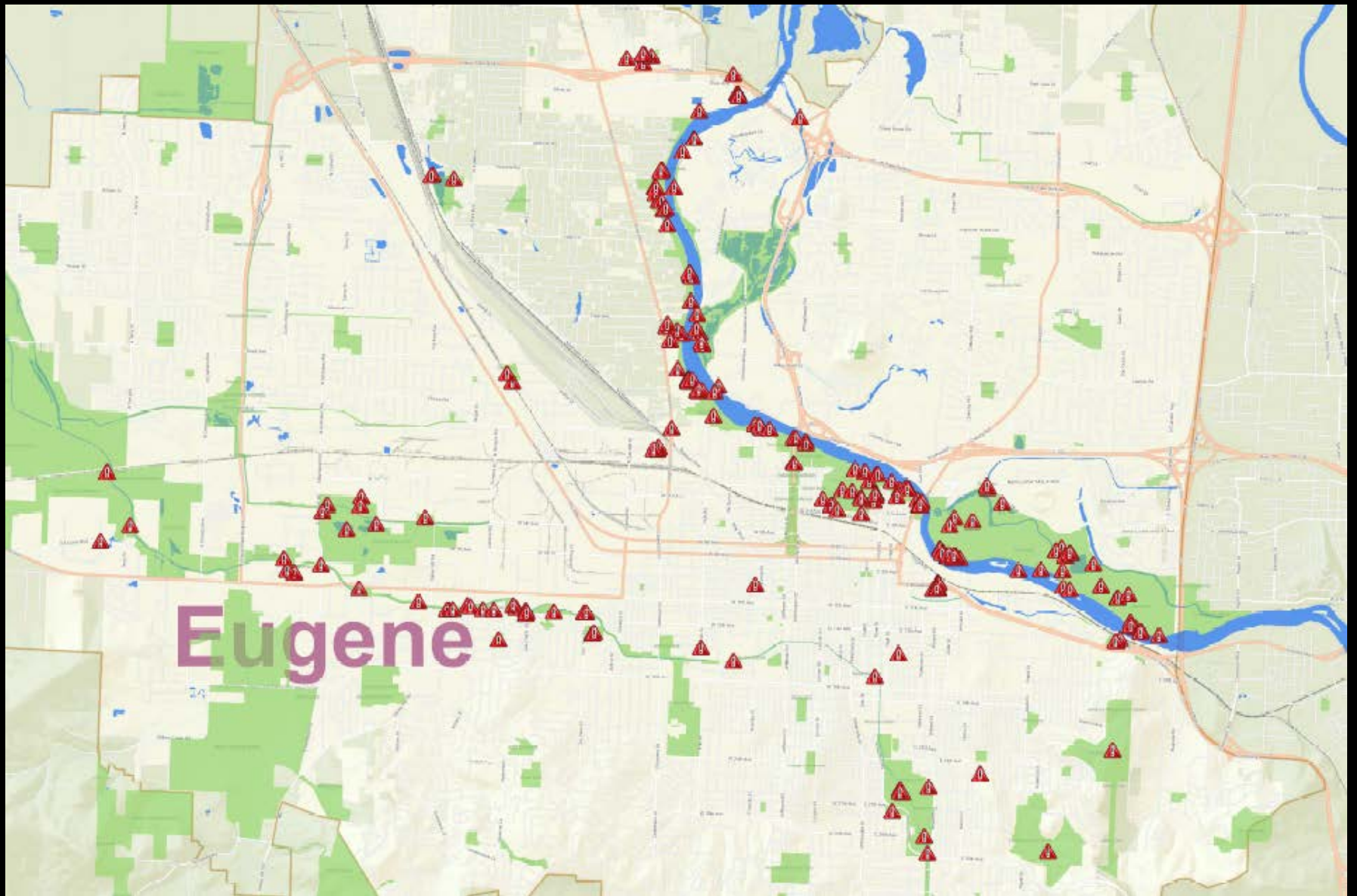


Camp clean up

Number of Illegal Camps



Six fold increase
Over \$250,000 in FY14



Camping sites throughout parks and natural areas in 2014



Hazardous to public health and environment



Meeting the Challenges



Capturing Efficiencies





Broadening worker skill sets



Utilizing Technology

Maintenance management systems

Asset management

Aiming volunteers at core services



2013

4,117 Volunteers

10,000 Hours

\$200,000 In Kind
Donation



Working with Opportunity Village to reopen Sladden Park restroom

Building Stronger Partnerships



Eugene Parks Foundation



Rotary Clubs







Stronger Collaboration with Internal Partners





Despite these efforts the system is stressed

Park Condition Assessment Rating





Overall cleanliness

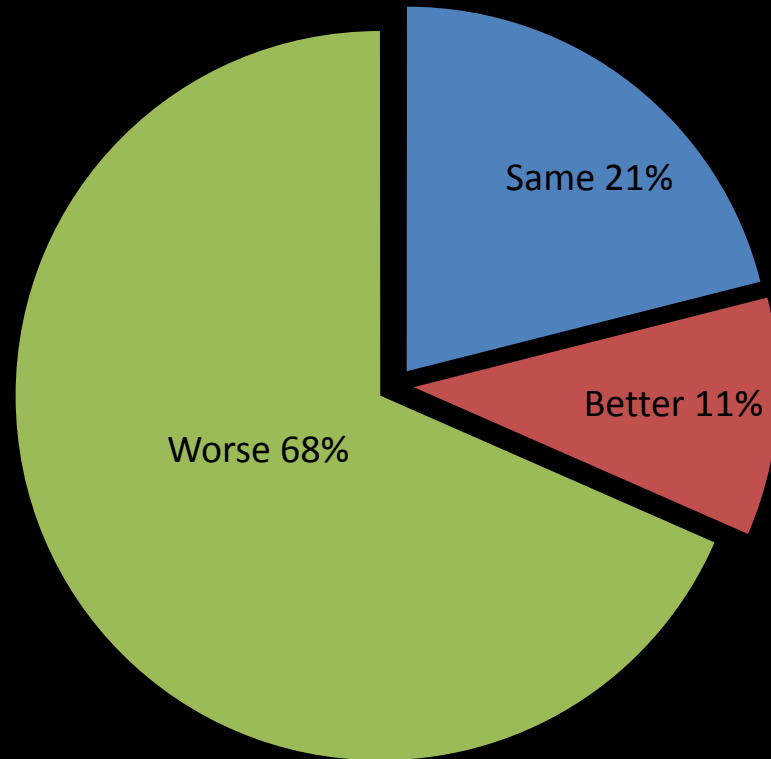
Safety

Equipment

Hardscape

Landscape

2009 to 2014 Asset Condition Change



Summary



Our parks and recreation facilities provide great value to community

Long community history to ensure these values and improve the system

Parks and Rec Divisions are working more efficiently to deliver
highest possible services

The system still needs to improve to meet community needs



What will our parks and recreation system look like in the future?



“ Nowhere in the world will you find a great city without great parks ”
- John Crompton



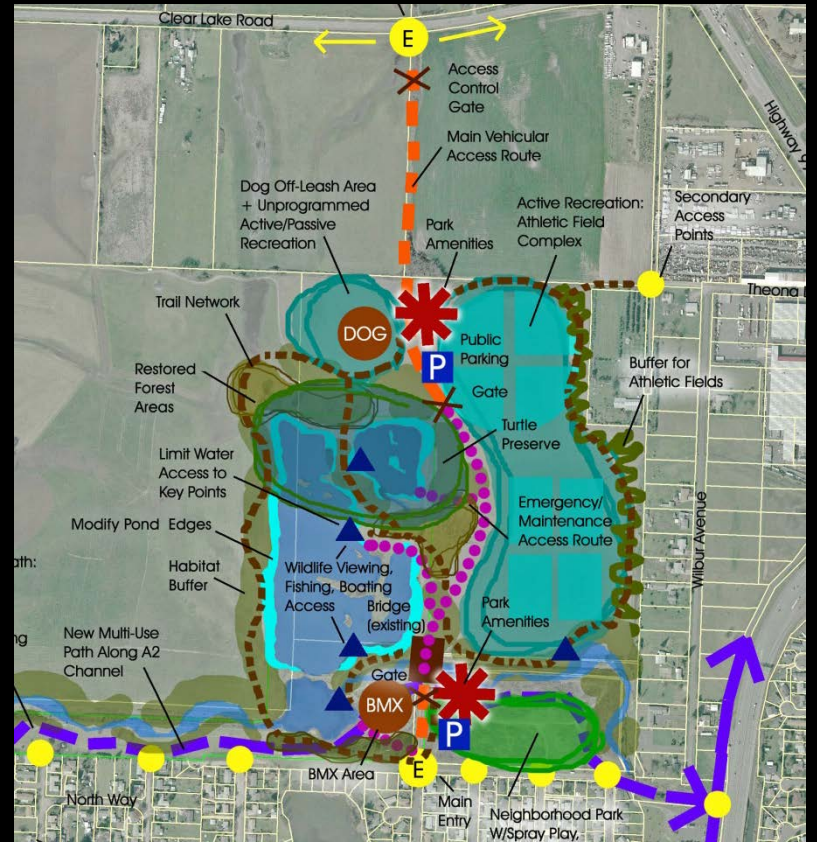
Creating a vision for the future

New Riverfront Park





Site of future Santa Clara Community Park and Community Center



Golden Gardens Sports Complex and Natural Areas



Suzanne Arlie Park



New Community Center in Churchill Willow Creek area

New developed parks in River Road/Santa Clara areas as well as North Eugene



More trails and connections



What type of parks and recreation system should we leave for future generations?