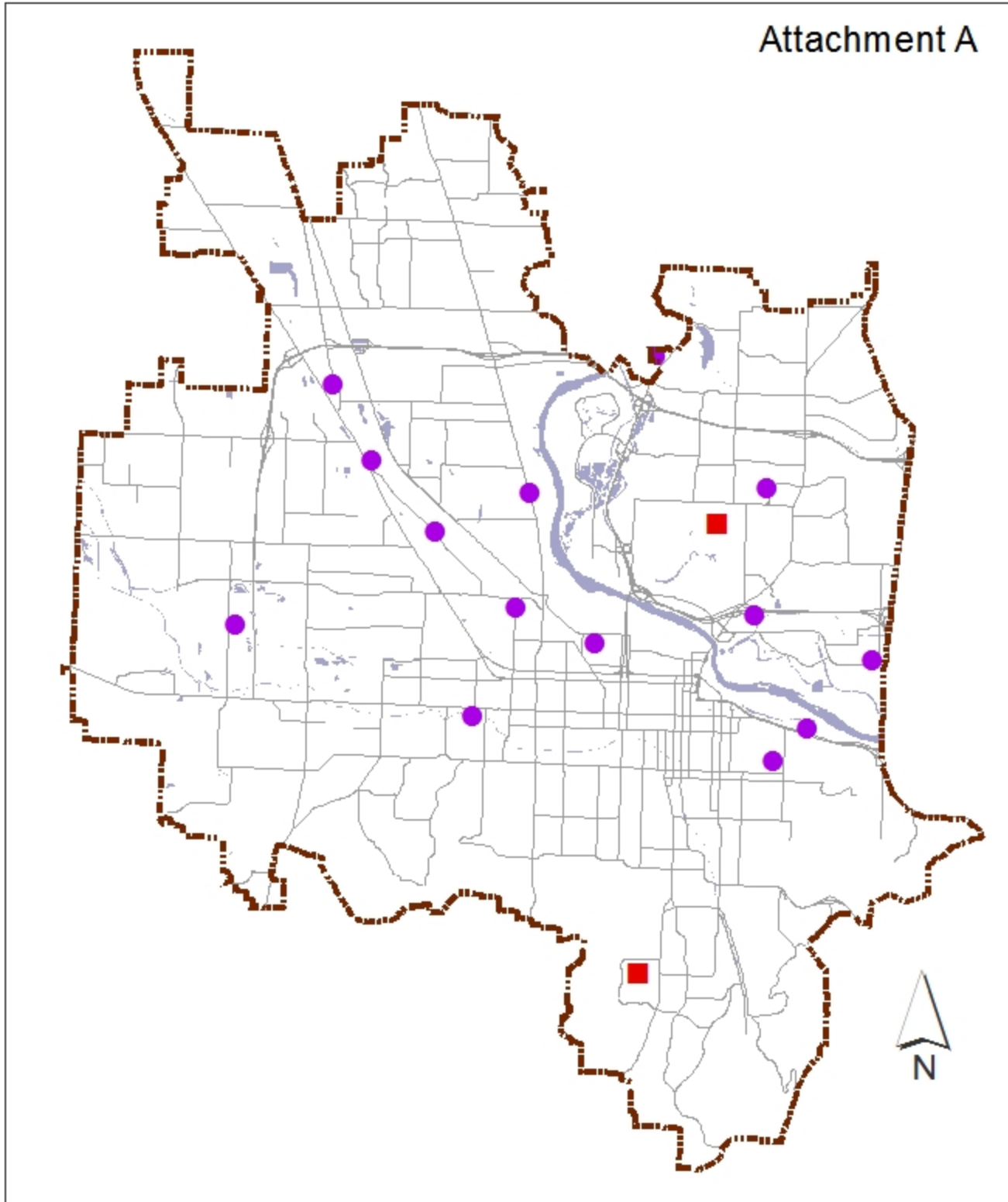


Cell Tower Locations 1997 - Present



Attachment A

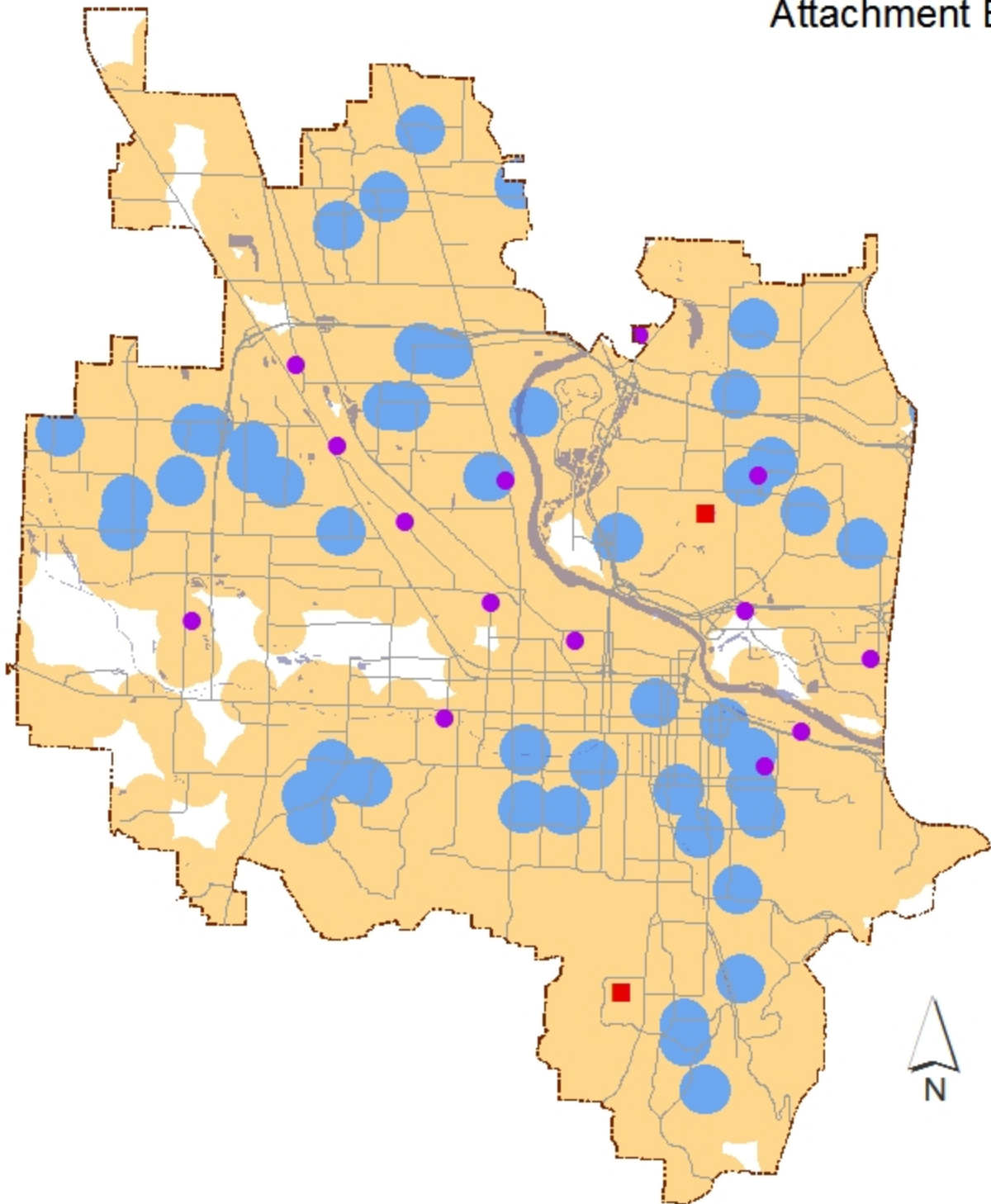


- Cell Towers Constructed after adoption of Telecommunication Ordinance (2/24/97)
- Towers approved, but not yet constructed

Residential and School Buffers, 1200 feet



Attachment B



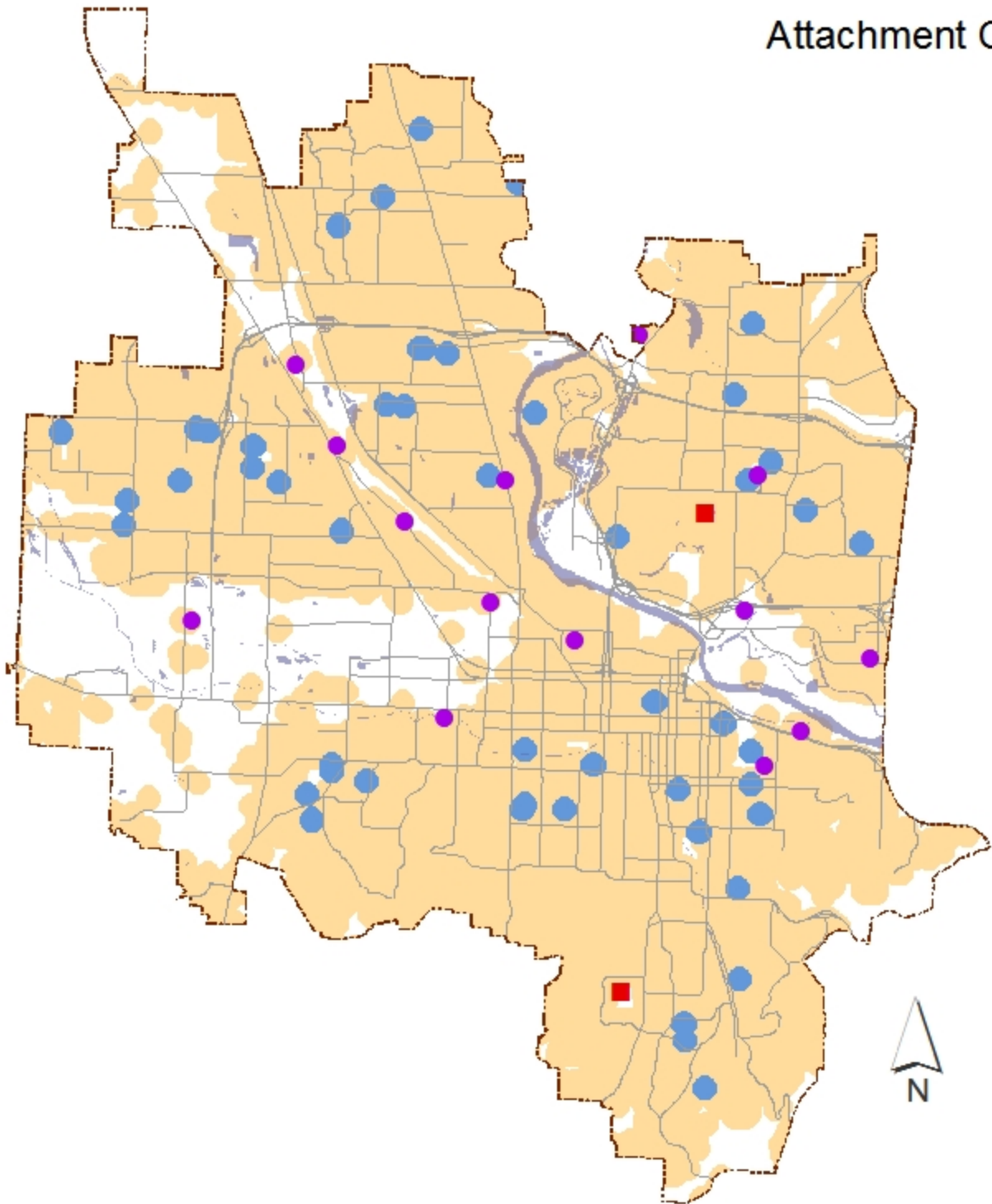
- Cell Towers Constructed after adoption of Telecommunication Ordinance (2/24/97)
- Towers approved, but not yet constructed
- 1200 ft. buffer from residences
- 1200 ft. buffer from schools

Caution: This map is based on imprecise source data, subject to change, and for general reference only.

Residential and School Buffers, 600 feet



Attachment C



- Cell Towers Constructed after adoption of Telecommunication Ordinance (2/24/97)
- Towers approved, but not yet constructed
- 600 ft. buffer from schools
- 600 ft. buffer from residences

Attachment D

Telecommunication Facilities: Comparison of key code provisions in residential zones

Residential Standard	City of Eugene	City of Beaverton
New Towers: Prohibited zones	R-2, R-3, R-4, AG, Historic (H), Natural Resource(NR), Park, Recreation and Open Space Zone (PRO); also prohibited in Willamette Greenway, Gillespie Butte and ridgeline	None. Allowed in all zones
New Towers: Land Use Process	<ul style="list-style-type: none"> • R-1: Type III public hearing process (Conditional Use Permit) • R-2, R-3, R-4: Prohibited 	All zones: Type III public hearing process (Conditional Use Permit)
Independent review	3 rd party technical review of applicant's materials required	No independent review required
Separation between towers	New towers must be 2000 feet or greater from existing towers	No specific requirement.
Co-location	Tower must be able to accommodate 2 providers	Tower must be able to accommodate 2 providers
Height Limits: New Towers	R-1: 75 feet	All residential zones: 80 feet
Minimum Setbacks: New Towers	Equal to height of the tower	Equal to height of the tower + 5 feet
Mechanical Equipment	Must be underground	Allowed above ground, in enclosed structure
Noise Impacts	Maximum of 45 decibels allowed at the property line	Baffling or sound barriers required but no noise limits specified
Landscape screening	6 ft. high, dense evergreen screening required around tower	City <u>may</u> require landscape screening; 10 foot high evergreen, every 30 feet