

Envision Eugene

December 10, 2014 UPDATE

Community Vision for Homes, Jobs, Parks & Schools

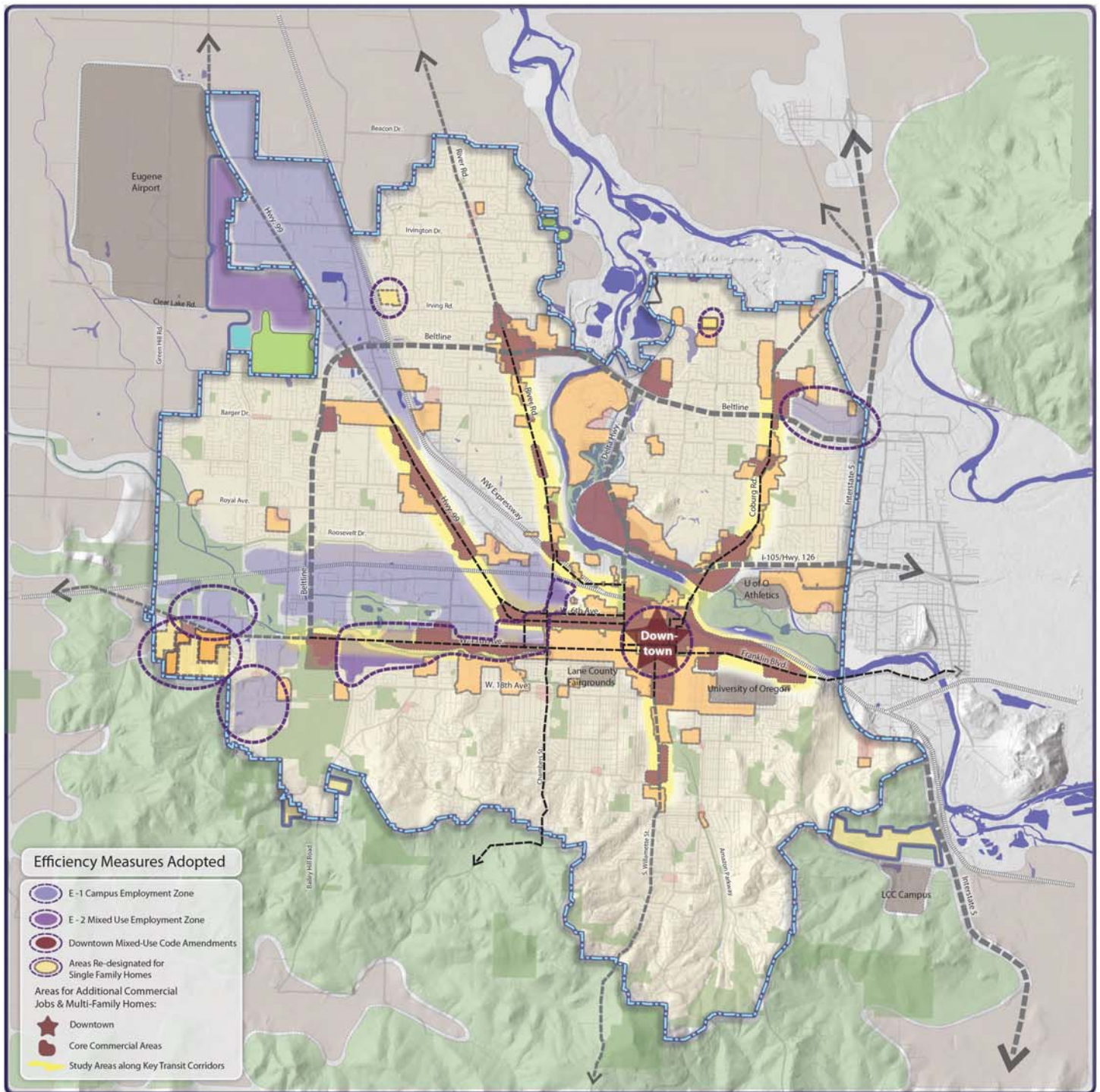
Legend

- UGB Expansion Preliminary Recommendations
- Urban Growth Boundary
- Freeway
- Major Road
- Railroad
- Water Bodies / Rivers
- Existing Multi-Family Areas
- Existing Single-Family Areas
- Other Commercial Areas
- Existing Industrial Areas
- Key Institutions
- Farms and Fields
- Hills and Forest
- Existing Parks & Open Space



www.EnvisionEugene.org

- Map is not tax lot specific and is for illustrative purposes only.
- This map shows uncompleted planned park and open space projects listed in the *Parks, Recreation and Open Space Project and Priority Plan (2006)*. Implementation of these projects will be dependent on future funding for acquisition, design, construction, and on-going maintenance, as well as future policy direction.
- This map updates the March 14, 2012 map found at www.envisioneugene.org



Envision Eugene

December 10, 2014 UPDATE

Community Vision for Homes, Jobs, Parks & Schools

Legend

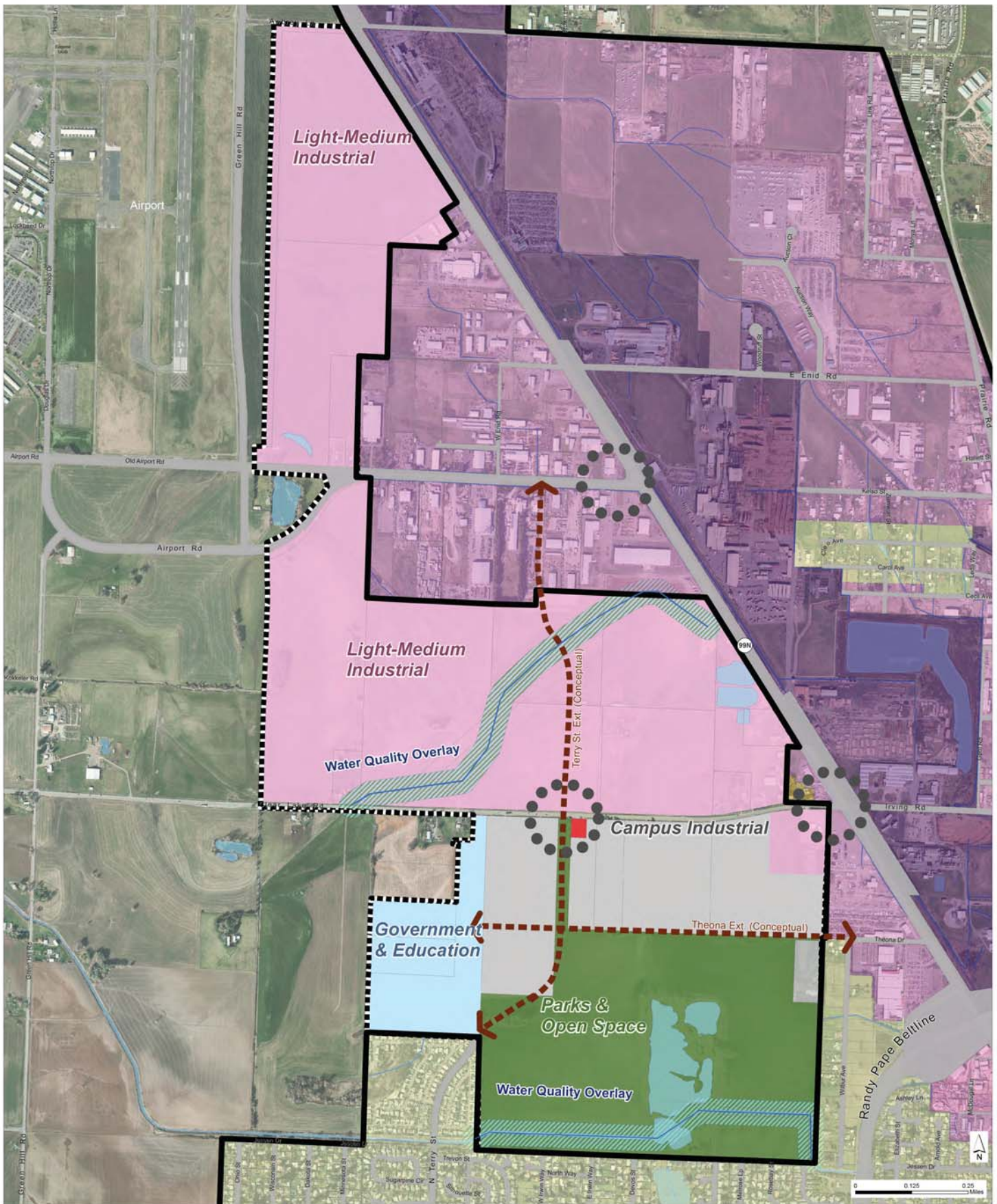
- UGB Expansion Preliminary Recommendations
- Urban Growth Boundary
- Freeway
- Major Road
- Railroad
- Water Bodies / Rivers
- Existing Multi-Family Areas
- Existing Single-Family Areas
- Other Commercial Areas
- Existing Industrial Areas
- Key Institutions
- Farms and Fields
- Hills and Forest
- Existing Parks & Open Space

0 miles 1 mile NORTH

www.EnvisionEugene.org

- Map is not tax lot specific and is for illustrative purposes only.
- This map shows uncompleted planned park and open space projects listed in the *Parks, Recreation and Open Space Project and Priority Plan (2006)*. Implementation of these projects will be dependent on future funding for acquisition, design, construction, and on-going maintenance, as well as future policy direction.
- This map updates the March 14, 2012 map found at www.envisioneugene.org

Clear Lake Area Recommended UGB Expansion



Current Eugene Urban Growth Boundary (UGB)
 Proposed Clear Lake Rd UGB Expansion Area
 N'hood Commercial

Light-Medium Industrial (LMI) designation
 Commercial designation
 Parks & Open Space designation
 Water Bodies

Campus Industrial designation
 Government & Education designation
 Water Quality Overlay

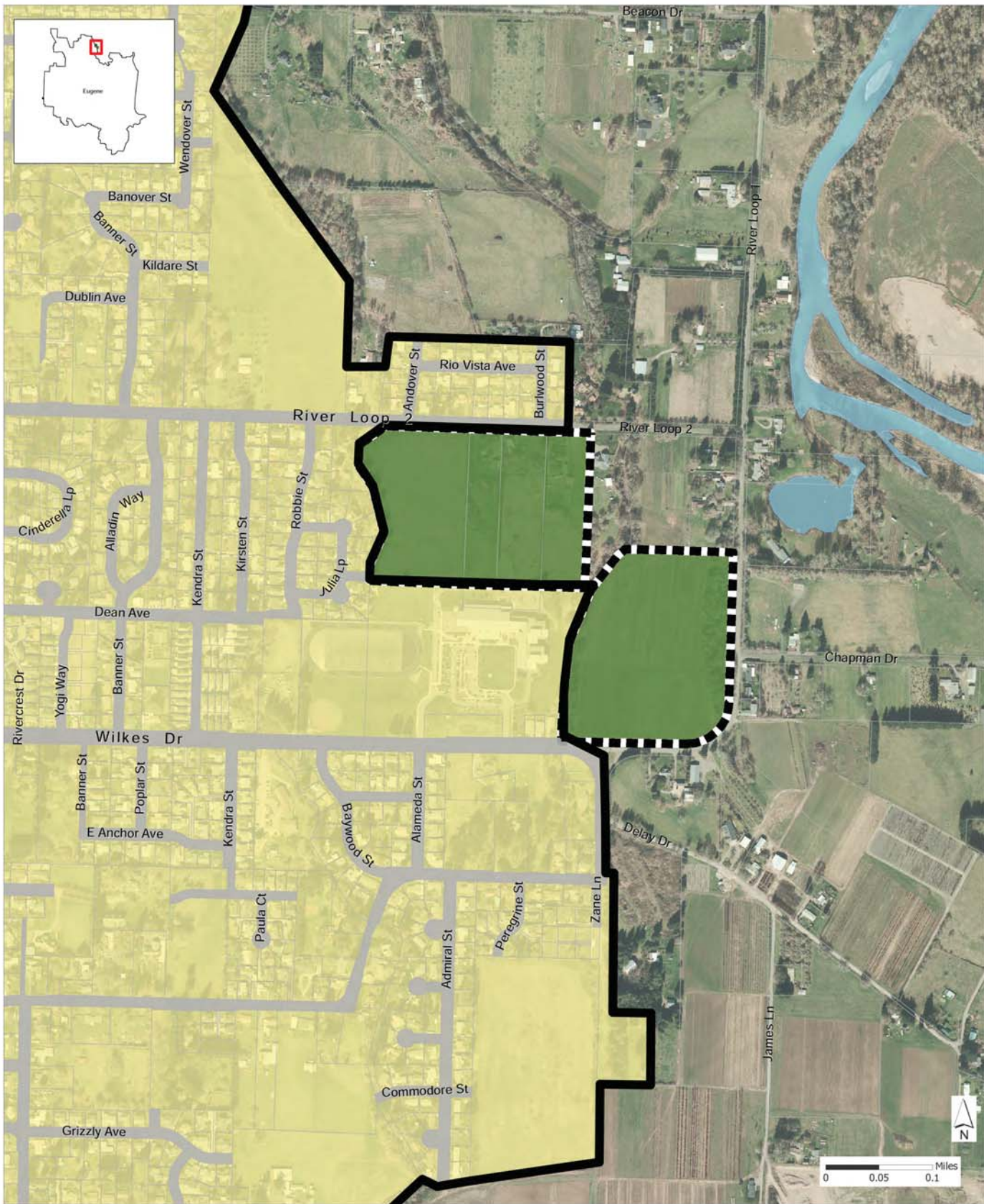
Stormwater Conveyance channels

Proposed UGB Expansion Acreage

Light Medium Ind 520
 Campus Ind 127
 Commercial 001
 Golden Gardens 222
 Bethel Schools 054

TOTAL 924

Santa Clara Area Recommended UGB Expansion



Current Eugene Urban Growth Boundary (UGB)
 Proposed Santa Clara UGB Expansion Area
 Taxlots
 Water Bodies

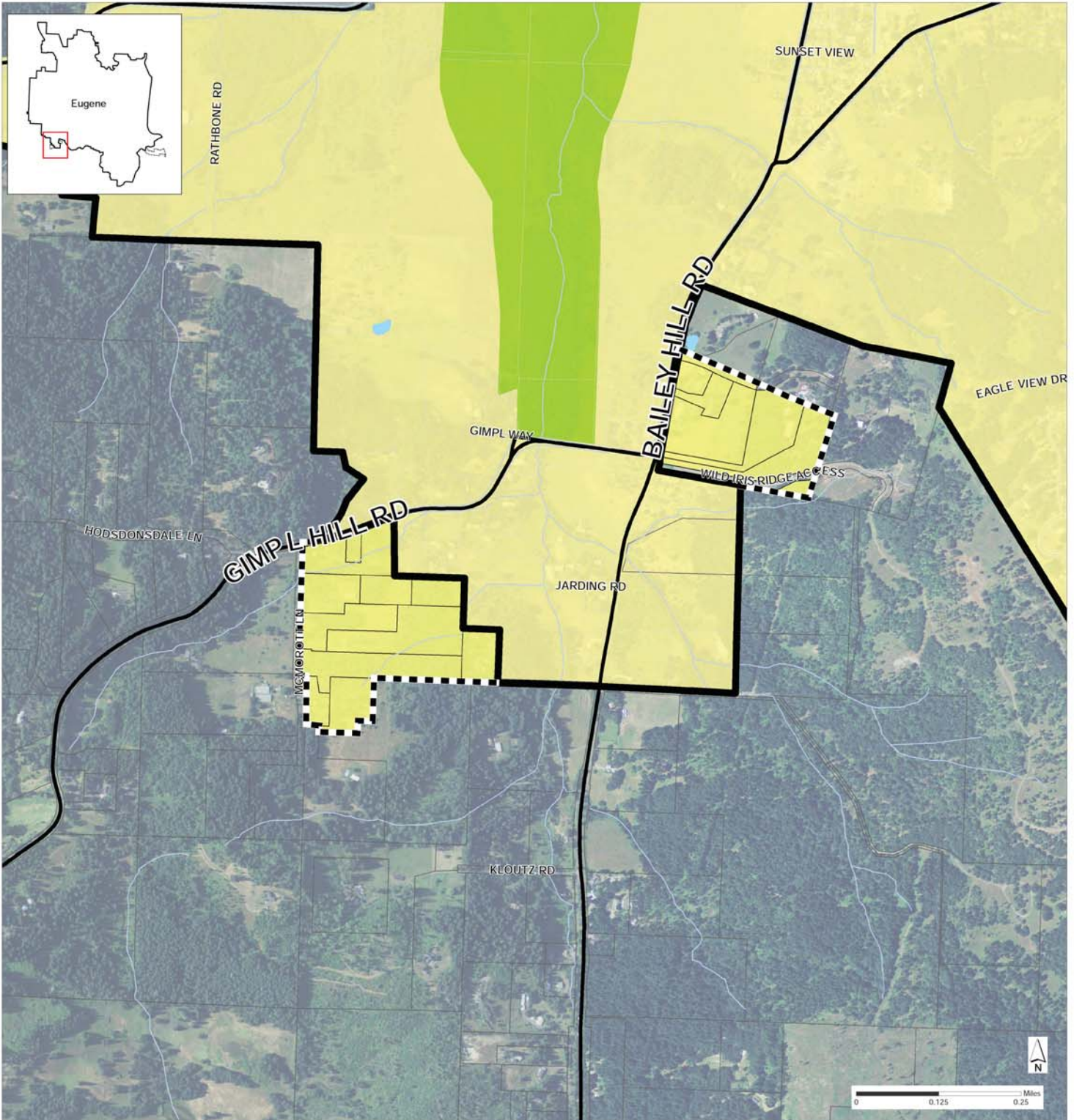
Plan Designation
 Low Density Residential
 Parks and Open Space

January 13, 2015

Caution: This map is based on imprecise source data, subject to change, and for general reference only.

Bailey Hill / Gimpl Hill

UGB Expansion Recommendation



Current Eugene Urban Growth Boundary (UGB)
 Recommendation UGB Expansion
 Tax lots
 ❧ Water Bodies

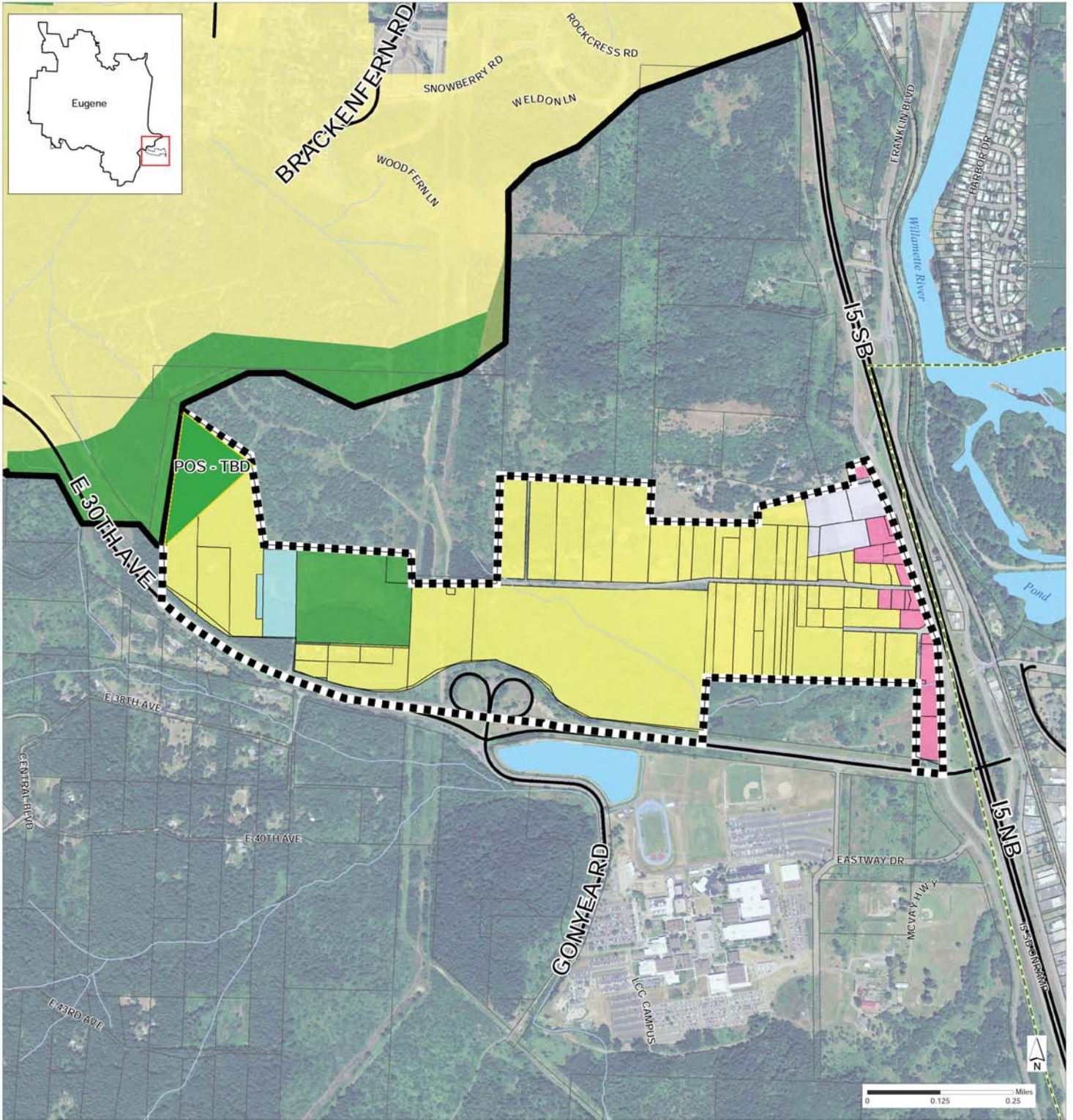
Plan Designations

Low Density Residential
 Natural Resource

Date: 1/13/2010
 By: [illegible]
 City of Eugene
 Lane County
 Caution: This map is based on approximate aerial data, subject to change, and for general reference only.
 Source: UGB Expansion Recommendation, Bailey Hill/Gimpl Hill area
 Date: 1/13/2010
 48

Bloomberg / McVay

UGB Expansion Recommendation



- Current Eugene Urban Growth Boundary (UGB)
 - Recommendation UGB Expansion
 - Tax lots
 - ❧ Water Bodies
- Plan Designations**
- Low Density Residential
 - Government & Education
 - Parks and Open Space
 - Commercial
 - Industrial

Base: Sotomayor
 GIS: Sotomayor
 City of Eugene
 Date: 11/13/2010

Caution: This map is based on expensive sensor data, subject to change, and for general reference only.
 Photo: Google Earth/Mapbox/Mapbox.com, Bloomberg City and State, Google, 11/13/2010