



Envision Eugene

Eugene City Council

July 20, 2015



Housing UGB Adoption Options

Option A 2012 -2032

Adoption
Process

Baseline
UGB

Monitoring, Area Planning, Code Projects, Urban Reserves

Monitoring
Report

Housing UGB Adoption Options

Option A 2012 -2032



Option B 2015 - 2035





Housing UGB Adoption Options

Option A 2012 - 2032



Option B 2015 - 2035



Hybrid Option 2012 - 2032





Eugene UGB: Hybrid Option

- Establish Baseline UGB (2012-2032)
- Update Needed Housing Regulations
- Establish Urban Reserves
- Monitor/Report on Residential Growth
- Action to Address Results of Monitoring
- Allocate Funds



Population Growth

2009 Adopted Population Forecast (2012-2032)	33,778
2015 Final PSU Population Forecast (2015-2035)	40,520
Difference	+ 6,742



Urban Reserves

- Allows the City to comprehensively plan for longer-term population growth (2032-2062)
- Provides rural land owners more certainty about their future
- Allows the City to more effectively provide public facilities
- Streamlines the next UGB expansion analysis
- Utilizes information gathered for Envision Eugene

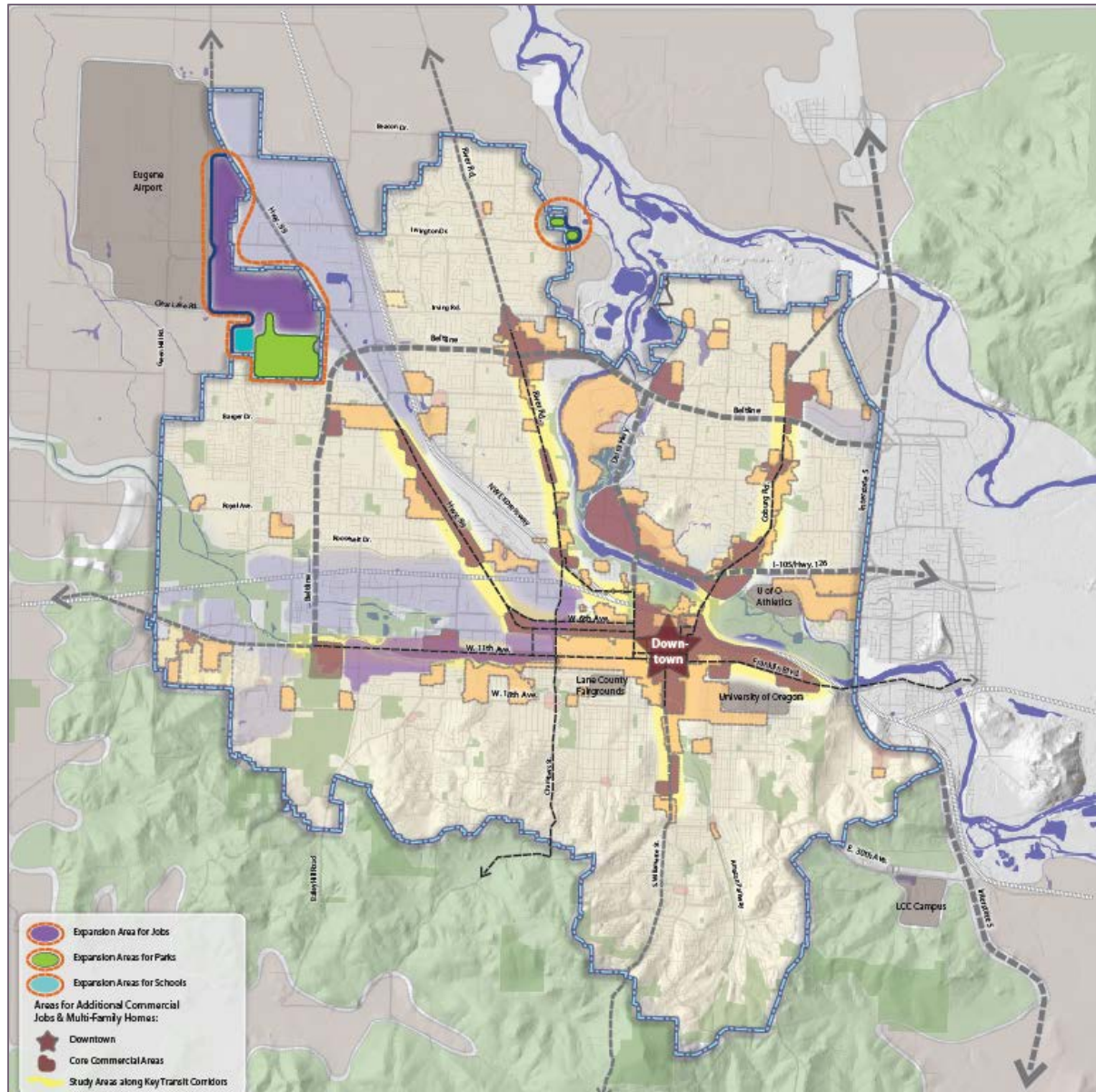
Cost Estimate	
Two staff planners for two years	\$400,000
Consultant technical analysis	\$350,000
Total for Two Years	\$750,000



Option B Cost Estimate

Cost Estimate	
Technical analysis inside current UGB	\$32,000
Land use efficiency strategies	\$20,000
Urban growth boundary expansion	\$405,000
Adoption package preparation	\$80,000
Total consultant costs	\$537,000

Community Vision



Questions?



Housing UGB Adoption Options

Hybrid Option 2012 - 2032

