

Beltline Highway – ODOT Facility Plan and Eugene Transportation System Plan

Eugene City Council
Work Session
September 30, 2015

Kurt Yeiter, Chris Henry, Frannie Brindle

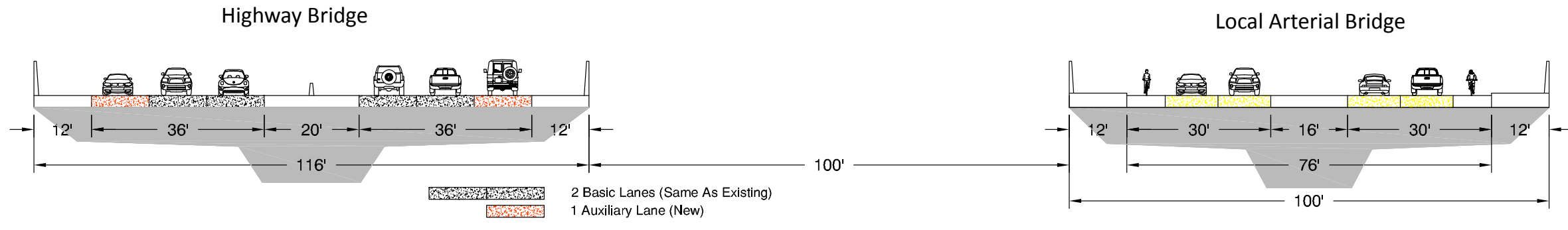






Typical Sections: Beltline Bridge over the Willamette River

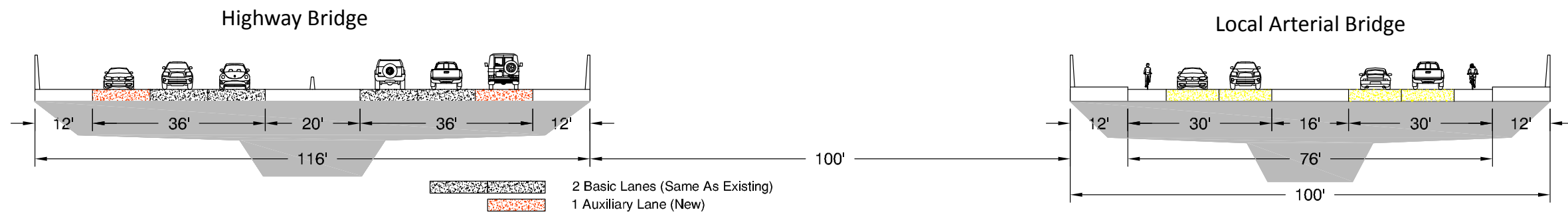
Improve Existing Concept



Improve existing concept

- Includes two through (basic) lanes on the Beltline Highway; the same as today.
- Adds an auxiliary lane between River Road and Delta Highway.
- Adds a local arterial bridge with two travel lanes, bike lanes and sidewalks from Beaver Street to Green Acres Road.
- Reconstructs the River/Division interchange in a similar form as today with some improvements to address the most pressing issues.

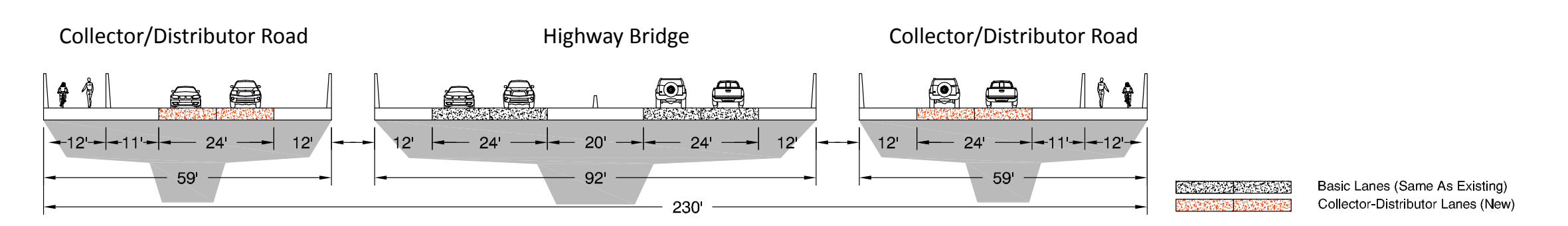
Auxiliary Lane Concept



Auxiliary lane concept

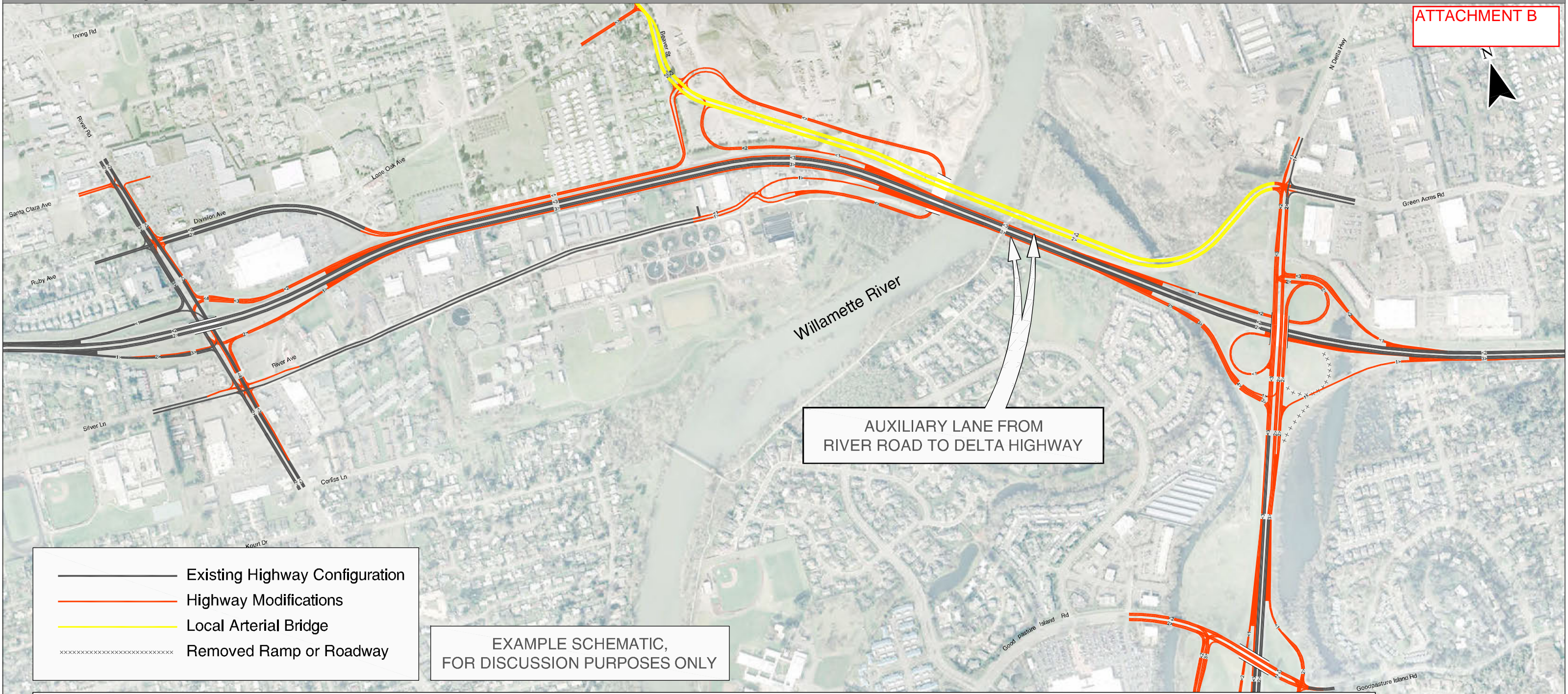
- Includes two through (basic) lanes on the Beltline Highway; the same as today.
- Adds an auxiliary lane between River Road and Delta Highway.
- Adds a local arterial bridge with two travel lanes, bike lanes and sidewalks from Beaver Street to Green Acres Road.
- Reconstructs the River/Division interchange with an overpass and a more conventional ramp and overcrossing configuration.

Collector Distributor Road Concept



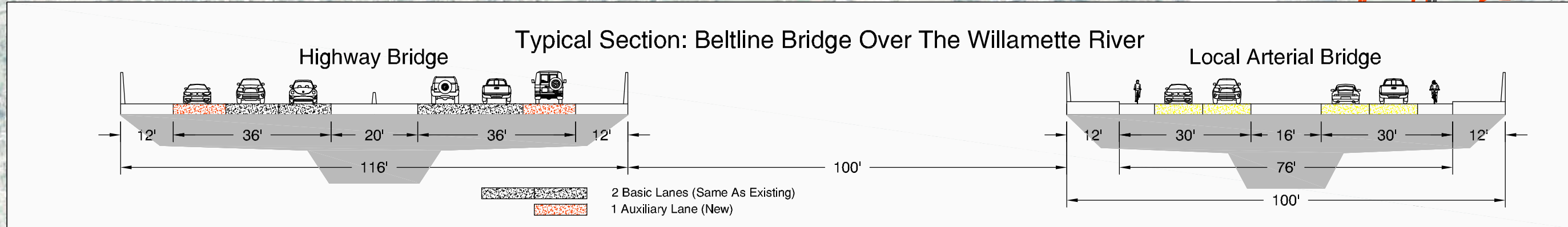
Collector distributor road concept

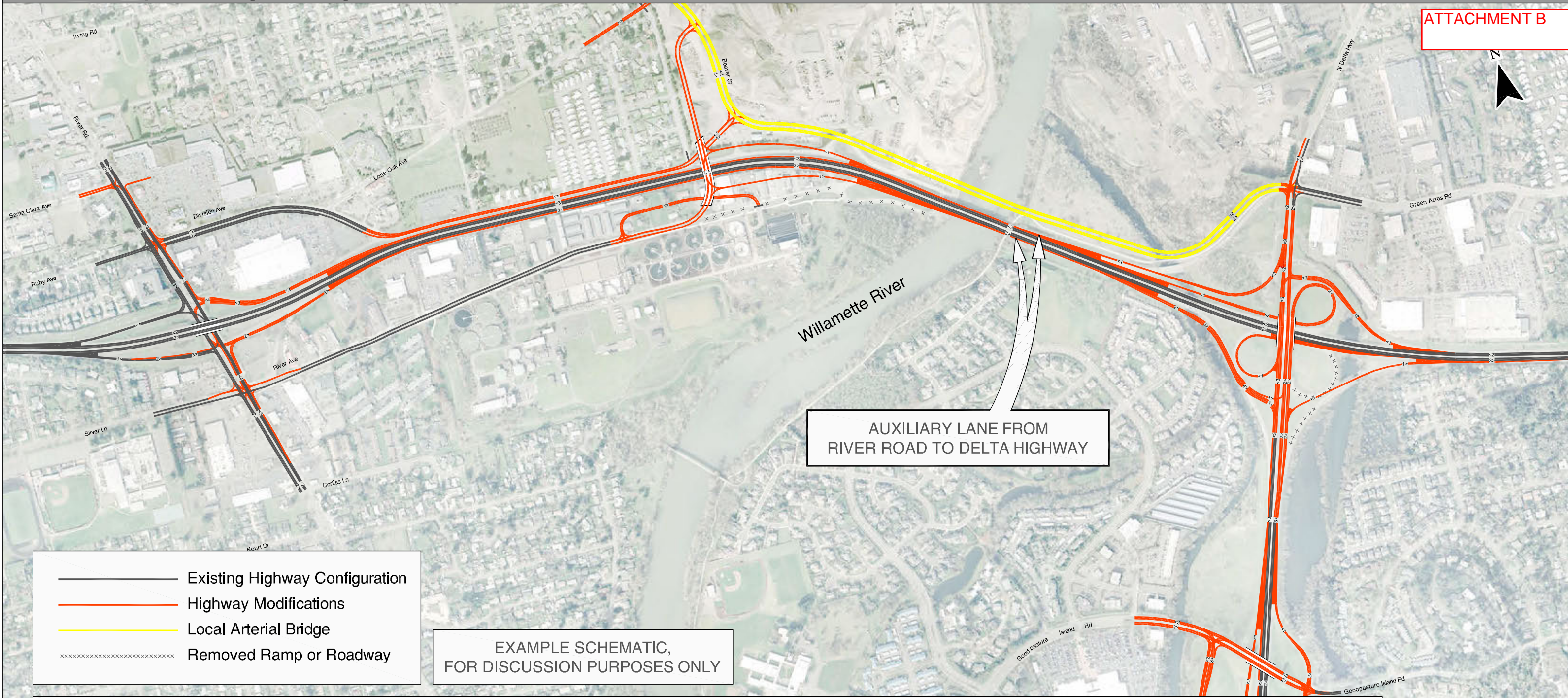
- Includes two through (basic) lanes on the Beltline Highway; the same as today.
- Adds an auxiliary lane between River Road and the collector-distributor road ramps.
- Constructs a collector-distributor road system between River/Division and Delta Highway.
- Reconstructs the River/Division interchange in a similar form as today with some improvements to address the most pressing issues.



- Existing Highway Configuration
- Highway Modifications
- Local Arterial Bridge
- Removed Ramp or Roadway

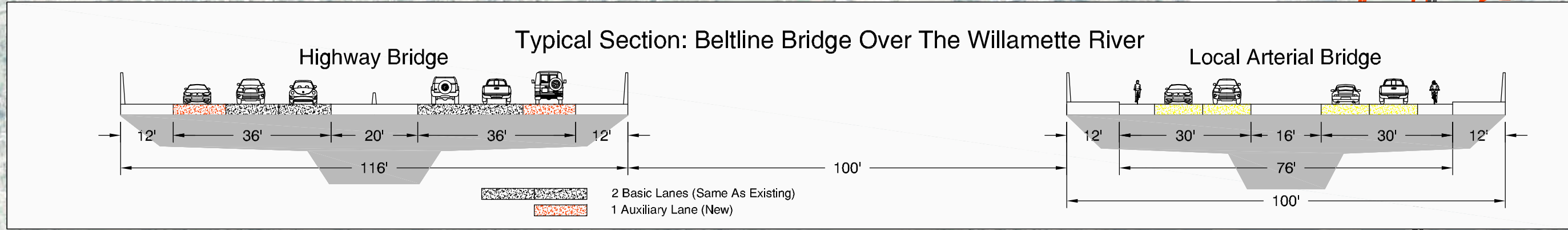
EXAMPLE SCHEMATIC,
FOR DISCUSSION PURPOSES ONLY

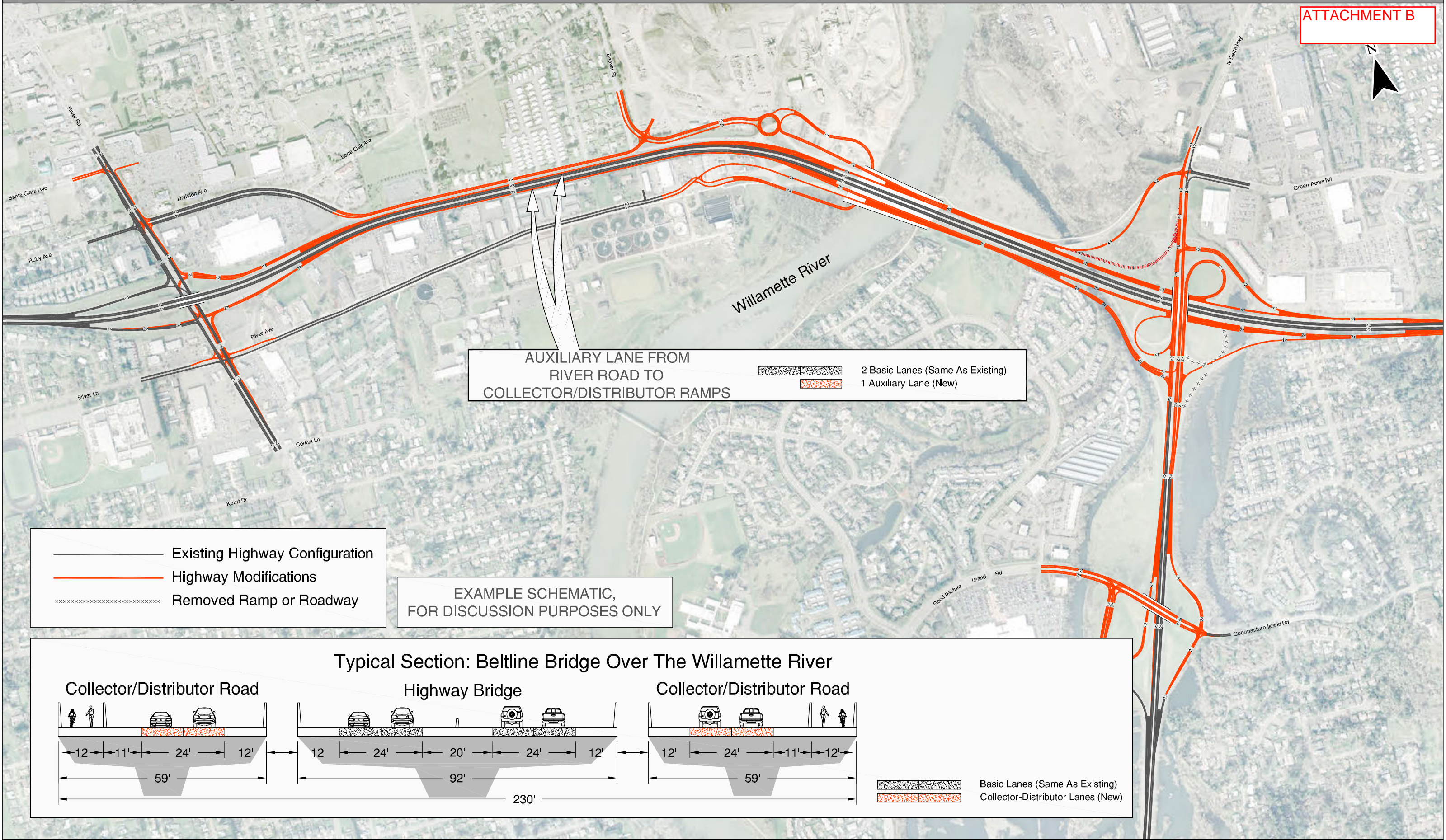




- Existing Highway Configuration
- Highway Modifications
- Local Arterial Bridge
- Removed Ramp or Roadway

EXAMPLE SCHEMATIC,
FOR DISCUSSION PURPOSES ONLY





AUXILIARY LANE FROM RIVER ROAD TO COLLECTOR/DISTRIBUTOR RAMPS

	2 Basic Lanes (Same As Existing)
	1 Auxiliary Lane (New)

Existing Highway Configuration
 Highway Modifications
 Removed Ramp or Roadway

EXAMPLE SCHEMATIC, FOR DISCUSSION PURPOSES ONLY

