

**PARKS AND
RECREATE**

PICTURE. PLAN. PLAY!



Eugene Working City

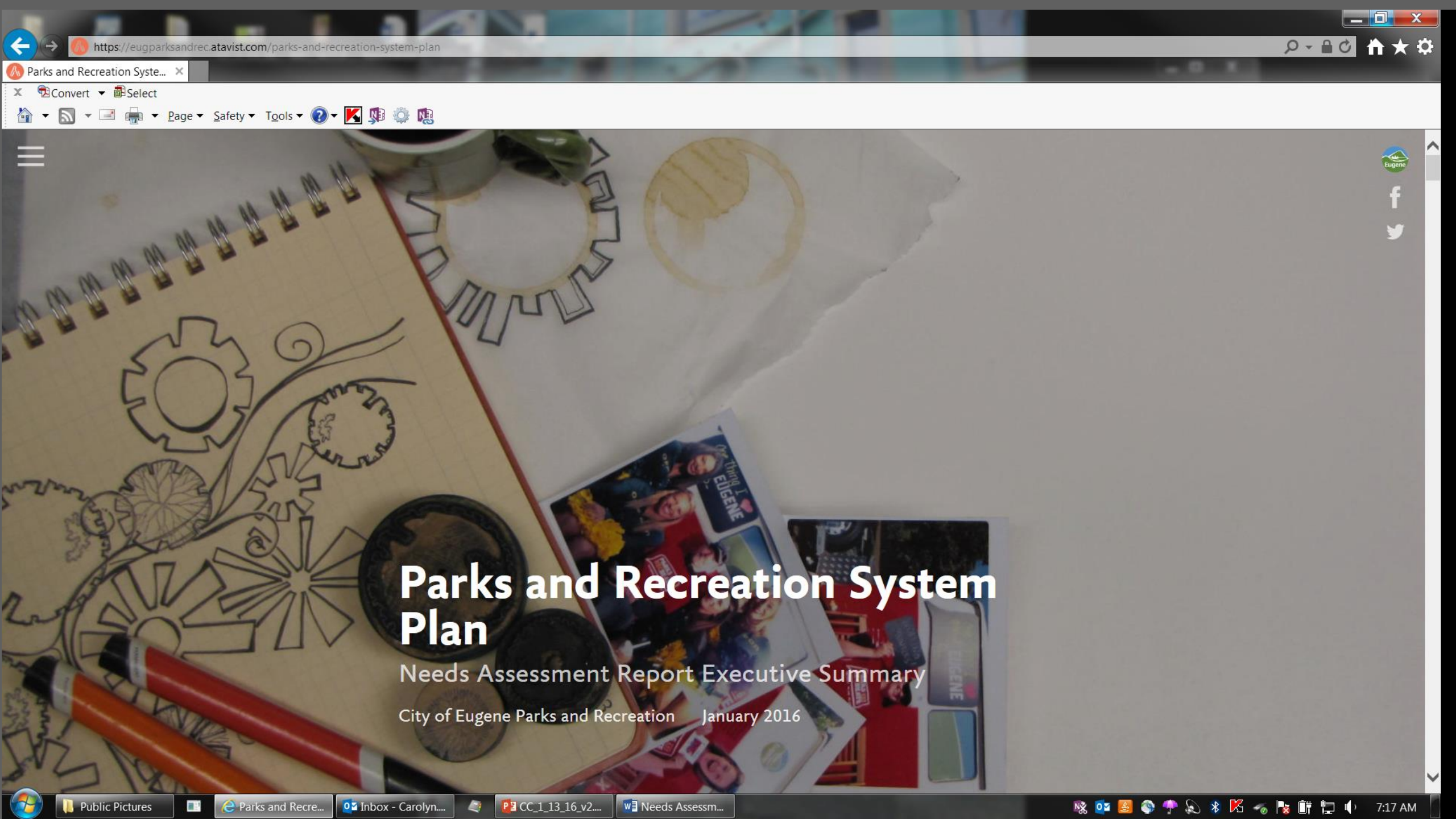


Sam Thrower
Host

NEEDS ASSESSMENT

- Process
 - Community Engagement
 - Technical Analysis
- What We've Learned
 - Strengths
 - Challenges
 - Opportunities
- Where We're Going
 - Guiding Themes
 - Next Steps





Parks and Recreation System Plan

Needs Assessment Report Executive Summary

City of Eugene Parks and Recreation January 2016

PROCESS

PROCESS

COLLECT

SUMMER 2015

Collect information from the community on current system

BUILD

FALL-SPRING 2015-16

Build draft plan based on collected information

REFLECT

SUMMER 2016

Reflect draft plan to the community, weigh priorities

REFINE

FALL 2016

Refine plan based on community priorities

ADOPT

WINTER 2016

Adopt plan through a process with Eugene City Council

COLLECT

Community Engagement + Technical Analysis

COMMUNITY ENGAGEMENT

We listened to 7,000 Residents

POP-UP EVENTS: 2,600 PARTICIPANTS





STAKEHOLDER LISTENING SESSIONS:

235 PARTICIPANTS

- Bethel and 4J School Districts
- Boys and Girls Club
- Kidsports
- Willamalane
- Lane County Parks
- Lane County Public Health
- YMCA
- EWEB
- Chamber of Commerce
- Homebuilders of Lane County
- University of Oregon
- Friends-of Groups/Park Advocates
- Recreation Partners
- Sports Organizations
- Natural Areas and Trails Users
- Aquatics Users
- Youth
- Parks and Open Space and Recreation Staff

SURVEYS: 3,700 PARTICIPANTS

- Statistically Valid Survey (400)
- Online System Survey (2,700)
- Recreation Facility Survey (600)

Here are some statements about Eugene's parks, community centers, and pool facilities. Please tell me if you strongly agree, somewhat agree, somewhat disagree, or strongly disagree with that statement?

Response Category	Strong agree	Smwt agree	Smwt disagree	Strong disagree	
Community centers and pool facilities meet the needs of my household	1	2	3	4	5
Community centers and pool facilities are easily accessible to my household	1	2	3	4	5
Community centers and pool facilities are safe to use	1	2	3	4	5
Community centers and pool facilities are well maintained	1	2	3	4	5
Natural areas meet the needs of my household	1	2	3	4	5
Natural areas are easily accessible to my household	1	2	3	4	5
Natural areas are safe	1	2	3	4	5
Natural areas are well-maintained	1	2	3	4	5

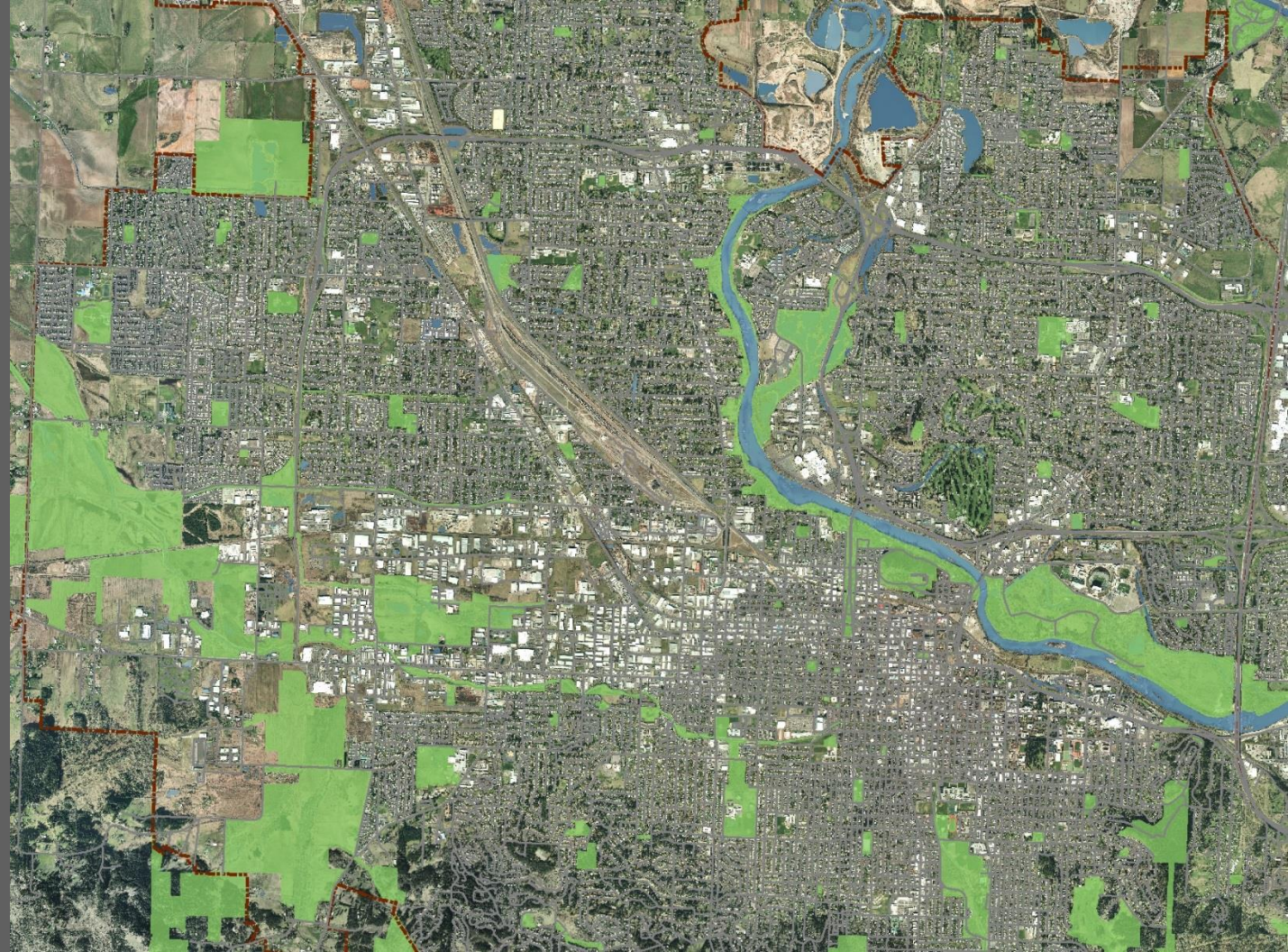
**90% of residents say Parks and
Recreation is important to their
quality of life**

LATINO COMMUNITY OUTREACH: 350 PARTICIPANTS



EQUITY MAPPING

- Community Centers
- Pools
- Parks



BENCHMARKING

- Boise, Idaho
- Fort Collins, Colorado
- Salem, Oregon
- Spokane, Washington
- Springfield, Oregon



BENCHMARKING

4,300 acres



350 garden plots



41 miles



BENCHMARKING

3 pools



1960s and 1970s



WHAT WE'VE LEARNED

STRENGTHS

PEOPLE LOVE EUGENE PARKS AND RECREATION



9.3 million park visits a year

By adult residents of Eugene, not including children or out of town visitors

**2.7 million Rec facility visits a
year**

By adult residents of Eugene, not including
children or out of town visitors



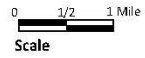
NATURAL AREAS PROVIDE BEAUTY AND CONNECTIVITY



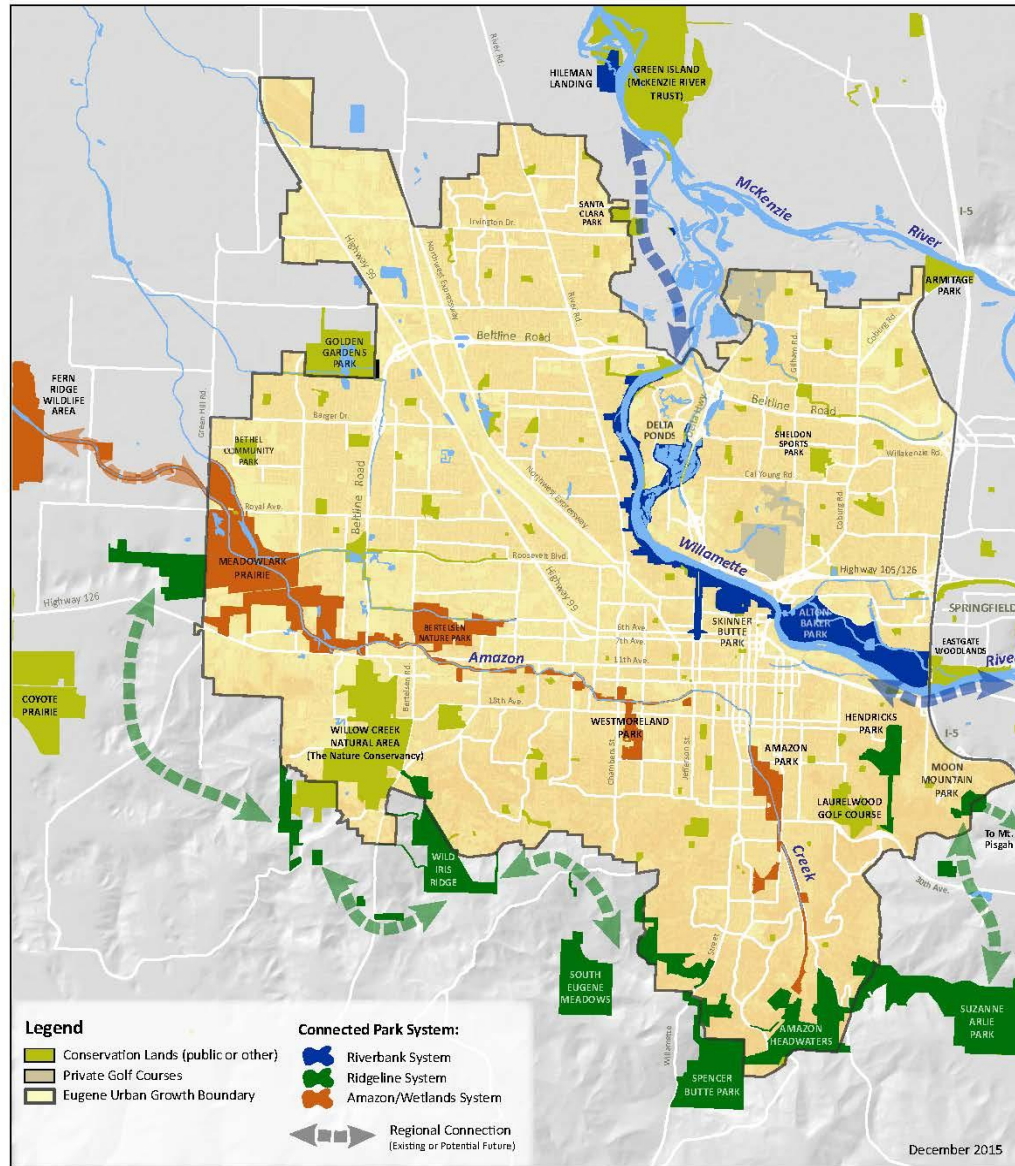








Highlighting Connected Park Systems Eugene Parks and Recreation System



PARKS AND RECREATION PROVIDE MANY BENEFITS



HEALTH AND WELLNESS



PERSONAL GROWTH



ECONOMIC PROSPERITY



COMMUNITY BUILDING



ENVIRONMENTAL HEALTH



LIVABILITY & SENSE OF PLACE

Youth and Family



Aquatics



Athletics



Seniors



Adaptive



Outdoor Program







Fun For All PROGRAM

at Sladden Park

FREE







ONE DAY A WEEK
CAN MAKE A WORLD OF
DIFFERENCE

paws



Valued at \$42 million annually

Earth Economics Report

CHALLENGES

PARK MAINTENANCE FUNDING GAP

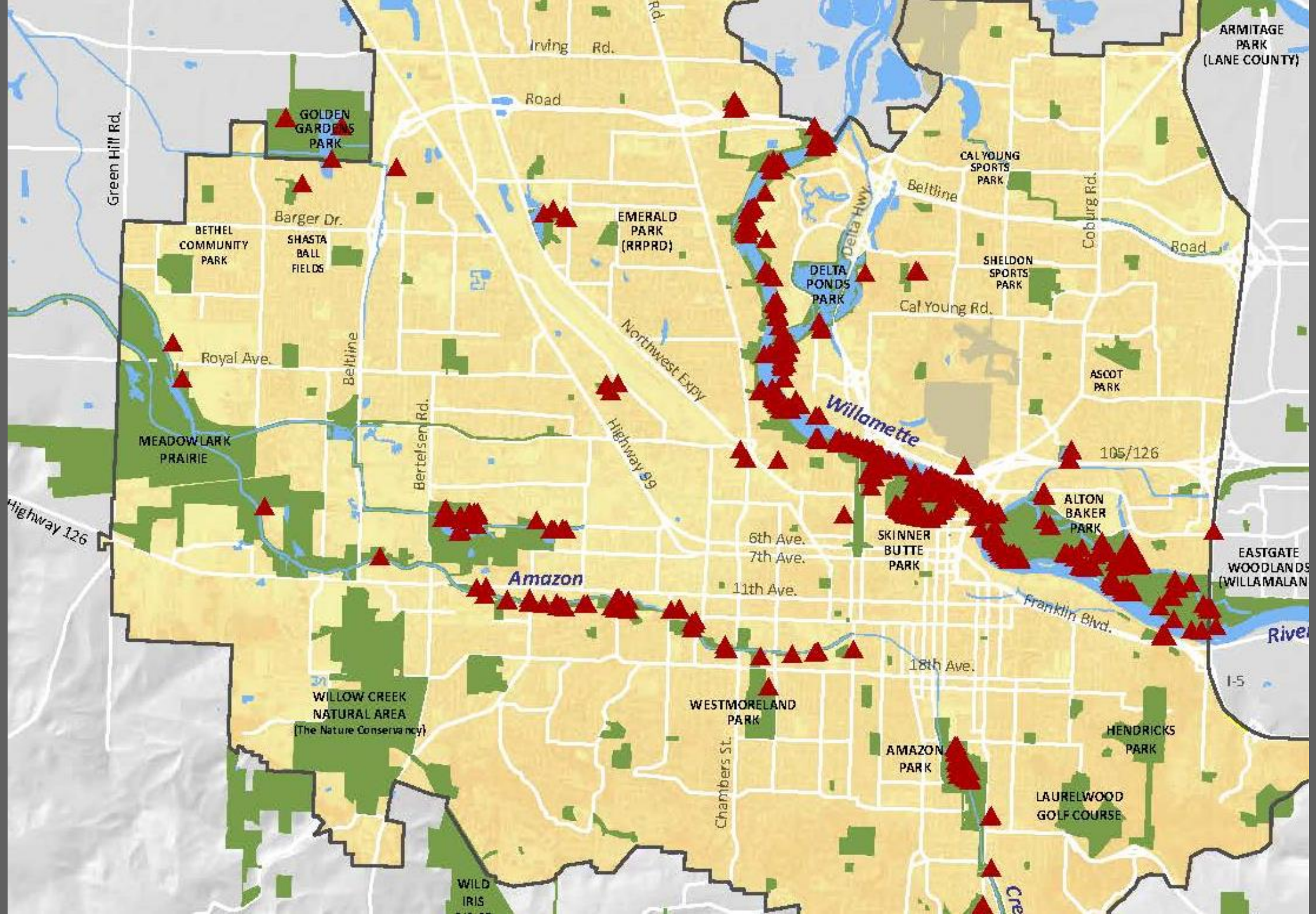


**96% of residents say it is
important to adequately fund
maintenance**



PARK SAFETY AND SECURITY







**87% of survey respondents are
concerned about the impacts of
illegal camping and vandalism in
Eugene's parks**







AGING COMMUNITY CENTERS, POOLS AND PARKS









EQUITY AND INCLUSION



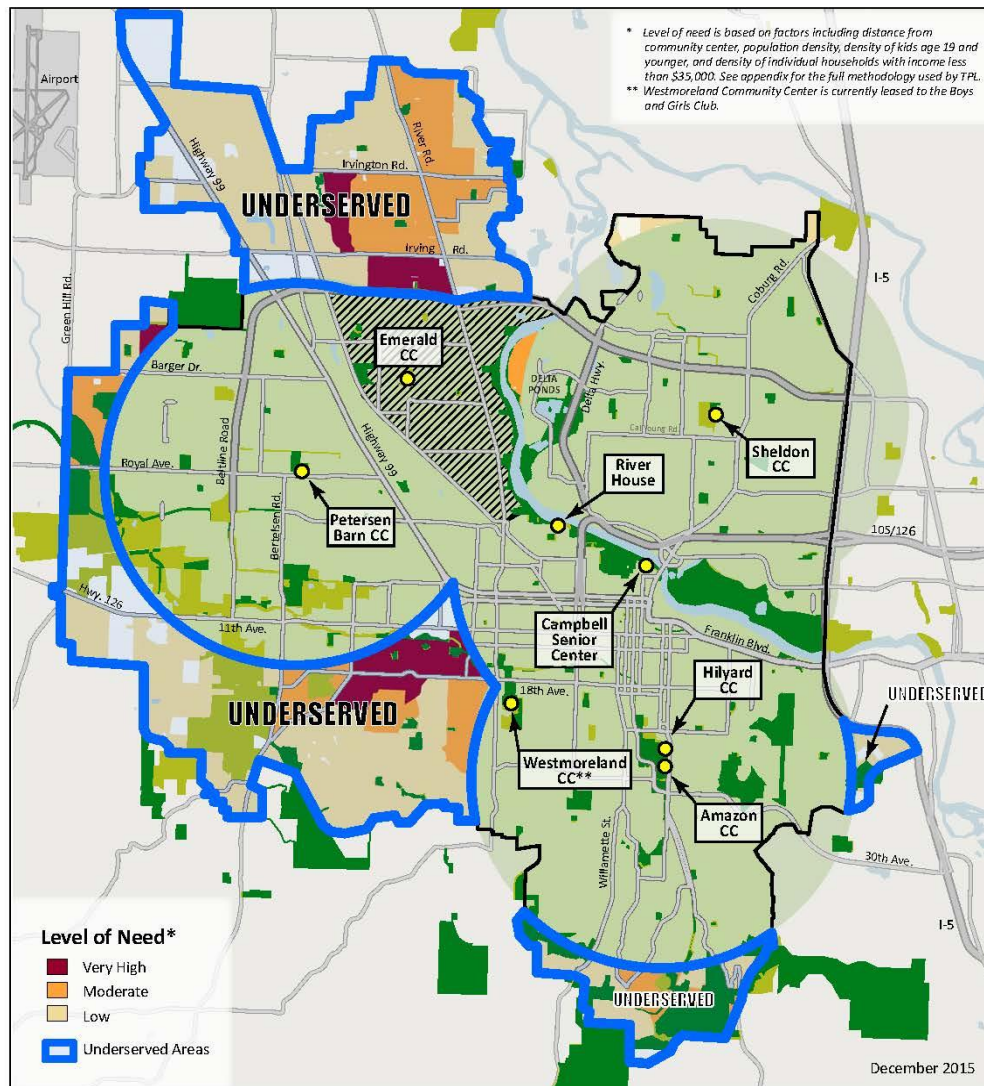
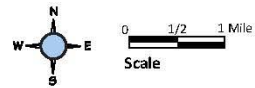


Community Center Service Area Equity Map

Eugene Parks and Recreation System

Legend

-  City and RRPRD Community Centers
-  City of Eugene Parks
-  Other Conservation Lands (non-City)
-  Community Center Service Areas
-  Emerald Recreation Center Service Area
-  Eugene Urban Growth Boundary (UGB)

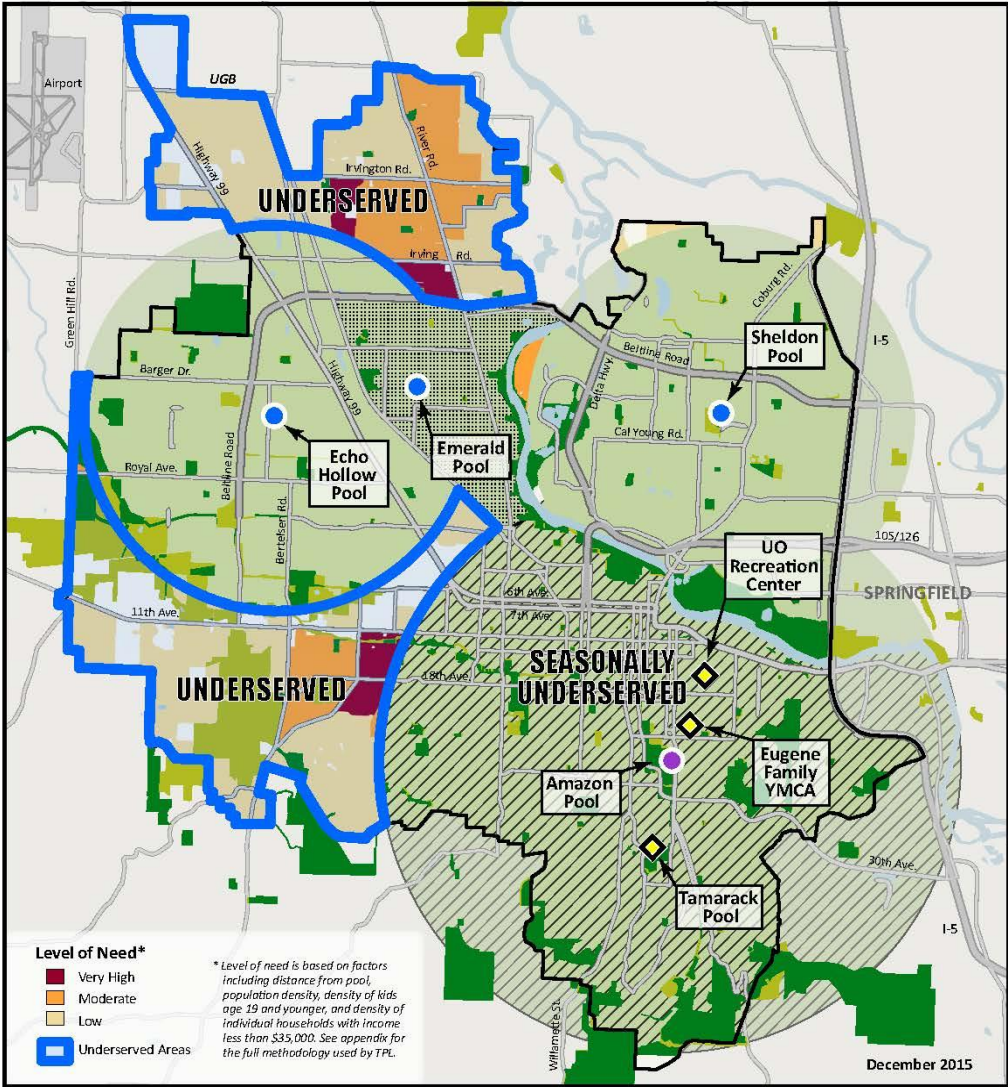
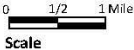


Aquatic Facility Service Area Equity Map

Eugene Parks and Recreation System

Legend

- City or RRPRD Aquatic Facility (all-season)
- City Aquatic Facility (seasonal)
- ◆ Other Aquatic Facility (all-season)
- City of Eugene Parks
- Other Conservation Lands (non-City)
- Public Aquatic Facility Service Areas
- Emerald Pool Service Area
- Open Seasonally Only
- Eugene Urban Growth Boundary (UGB)



Level of Need*

- Very High
- Moderate
- Low
- Underserved Areas

*Level of need is based on factors including distance from pool, population density, density of kids age 19 and younger, and density of individual households with income less than \$35,000. See appendix for the full methodology used by TPL.

December 2015

OPPORTUNITIES

OPPORTUNITIES

- Provide basic amenities and restrooms
- Provide more access to water (the river and pools)
- Provide more programming and events in parks



WHERE WE'RE GOING

GUIDING THEMES

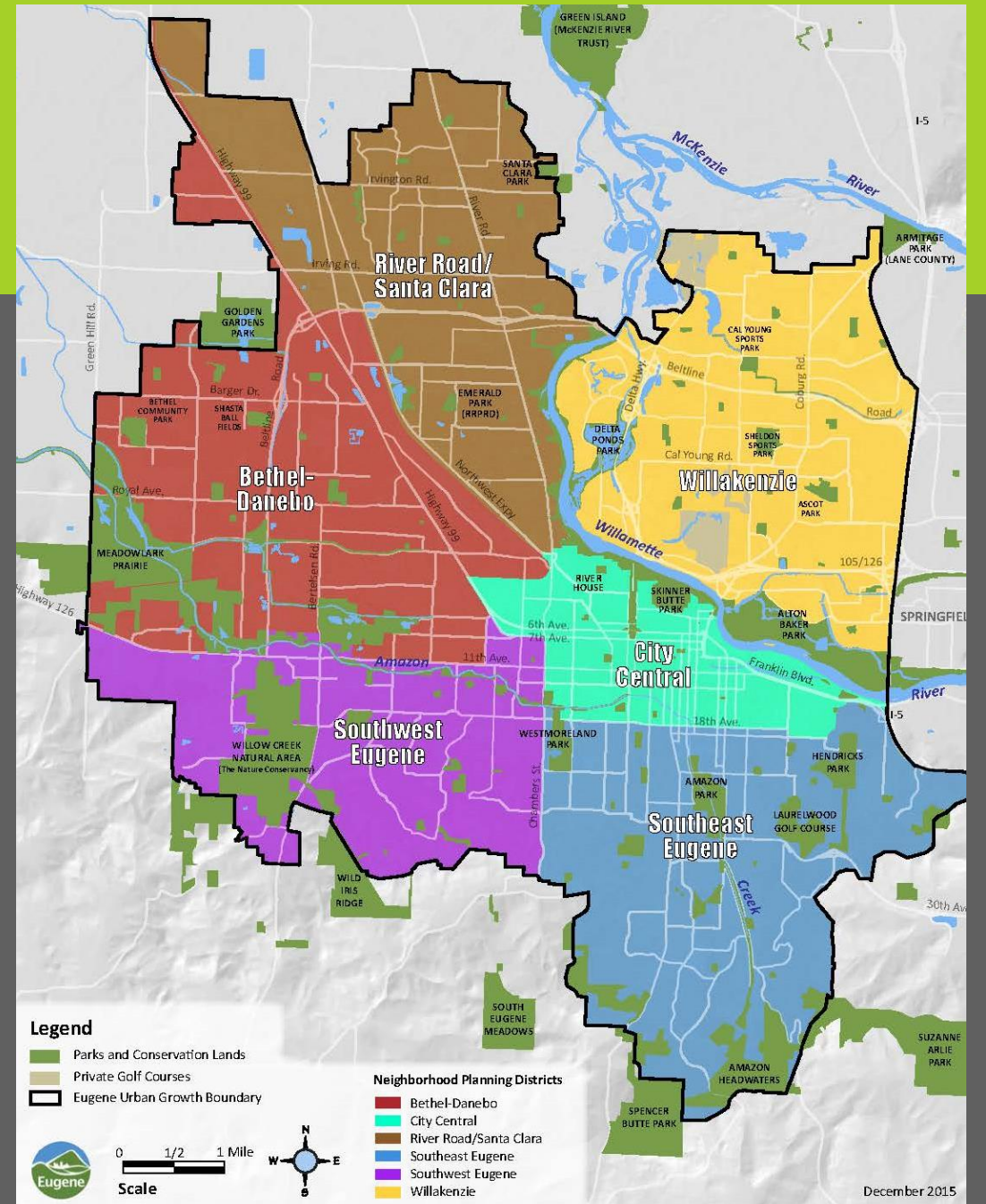
1. Serve the entire community
2. Care for what we have
3. Grow responsibly
4. Integrate with other systems
5. Invest in partnerships



NEXT STEPS

Public Workshops

Petersen Barn	Saturday 2/6	1:00-2:30 pm
Downtown Library	Monday 2/8	6:00-7:30 pm
Churchill High School	Wednesday 2/10	6:00-7:30 pm
Hilyard Community Center	Saturday 2/13	10:30-noon
Sheldon Community Center	Wednesday 2/17	6:00-7:30 pm
Madison Middle School	Thursday 2/18	6:00-7:30 pm



PROCESS



FOR MORE INFORMATION

- Needs Assessment
 - Executive Summary
 - Full Report
 - Appendix
- Workshop dates, locations and times

www.eugparksandrec.org