



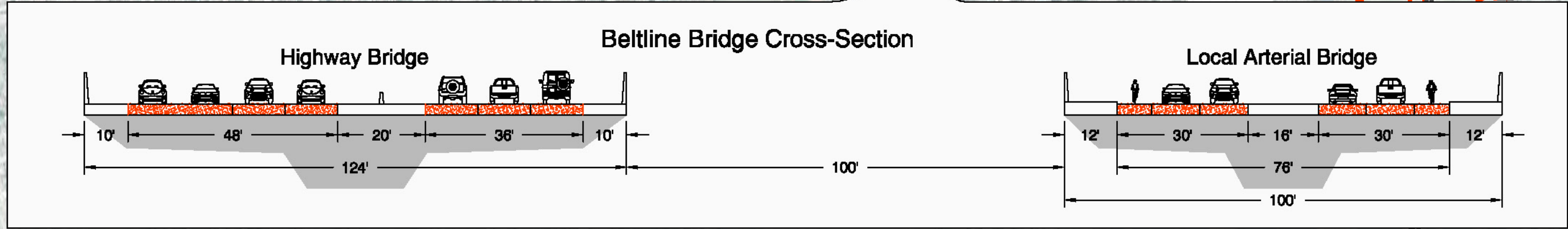
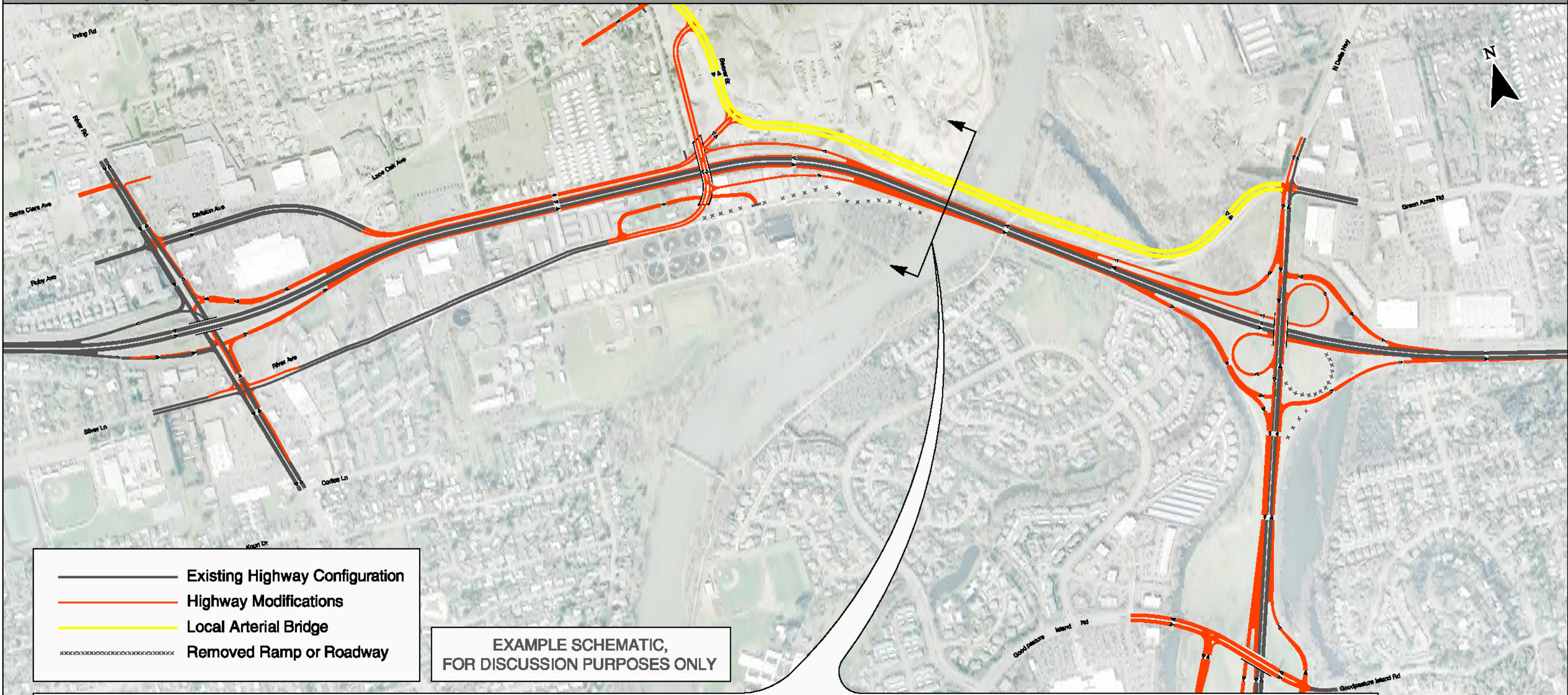






-  Existing Highway Configuration
-  Highway Modifications
-  Local Arterial Bridge
-  Removed Ramp or Roadway

EXAMPLE SCHEMATIC,
FOR DISCUSSION PURPOSES ONLY





-  Existing Highway Configuration
-  Highway Modifications
-  Local Arterial Bridge
-  Removed Ramp or Roadway

EXAMPLE SCHEMATIC,
FOR DISCUSSION PURPOSES ONLY

