



# PARTNERSHIP OPPORTUNITY

Lane County & City of Eugene

Historical Museum





Leeks  
\$1.35

Leeks  
\$1.40

Zucchini











FARMERS  
PUBLIC MARKET

"By 1928, the market was hopelessly overcrowded; with 80 stalls available, 90 to 115 producers were on hand every day the market was open."

- Market Days





LANE COUNTY  
COURTHOUSE

PLAZA  
CLOSED





CELEBRITY  
PARK  
HERE  
Downing

CELEBRITY  
PARK  
HERE  
←  
PARK HERE  
Rates for all vehicles are as follows:  
1st Hour \$2.00  
2nd Hour \$2.00  
3rd Hour \$2.00  
4th Hour \$2.00  
Daily Rate \$10.00  
Maximum Parking Time 24 Hours  
Maximum Daily Rate \$10.00  
Maximum Monthly Rate \$300.00  
Maximum Annual Rate \$3,600.00  
www.celebrityparking.com  
1-800-555-1234

ONLY



against all claiming and  
On Witness where of we  
Mary Skinner his wife have  
we herunto set our hands and  
and date above written.

1800

E. S. Skinner  
Mary Skinner

W. S. Skinner  
Mary Skinner

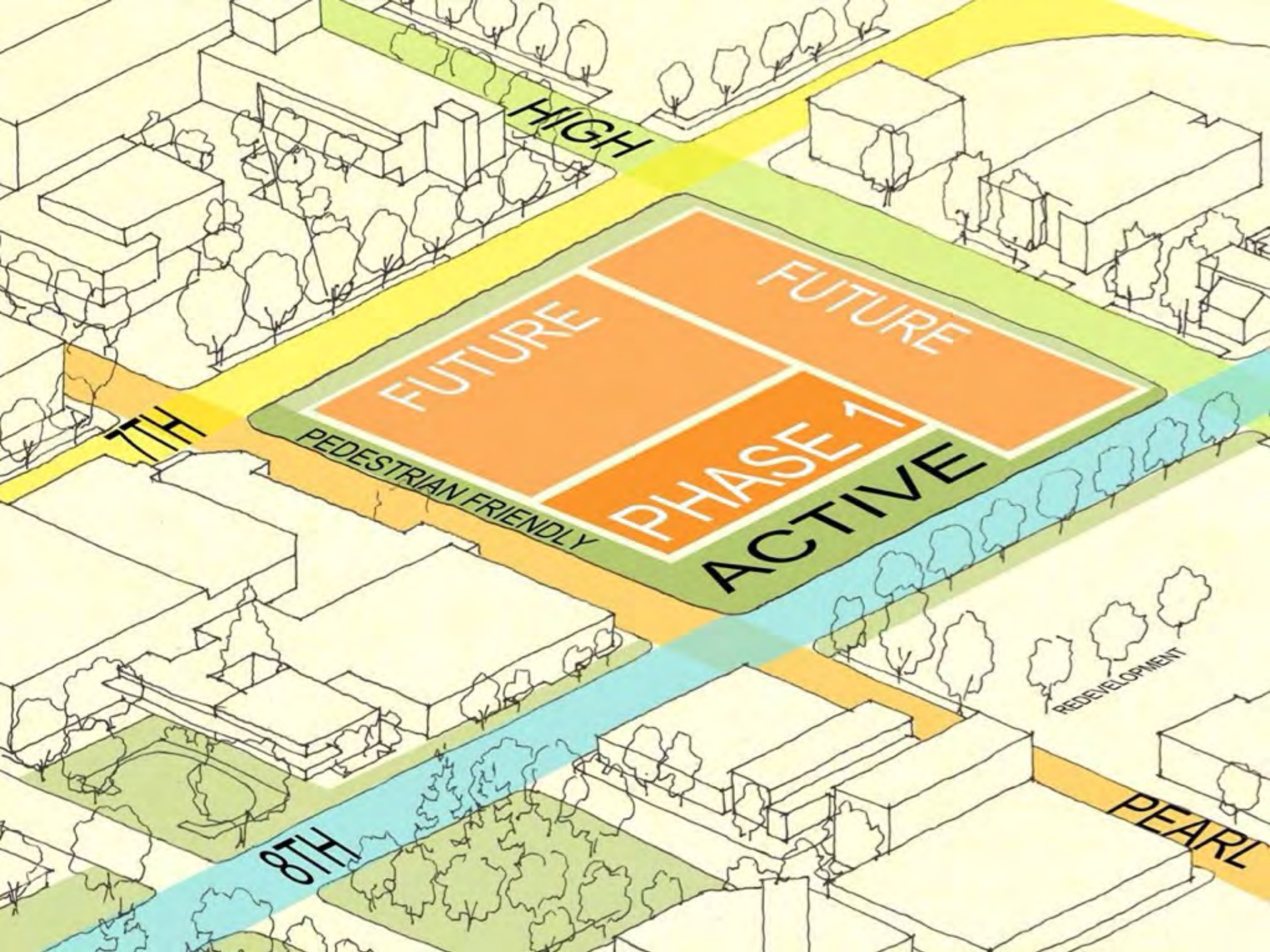












HIGH

FUTURE

FUTURE

PHASE 1

ACTIVE

PEDESTRIAN FRIENDLY

8TH

REDEVELOPMENT

PEARL

8TH



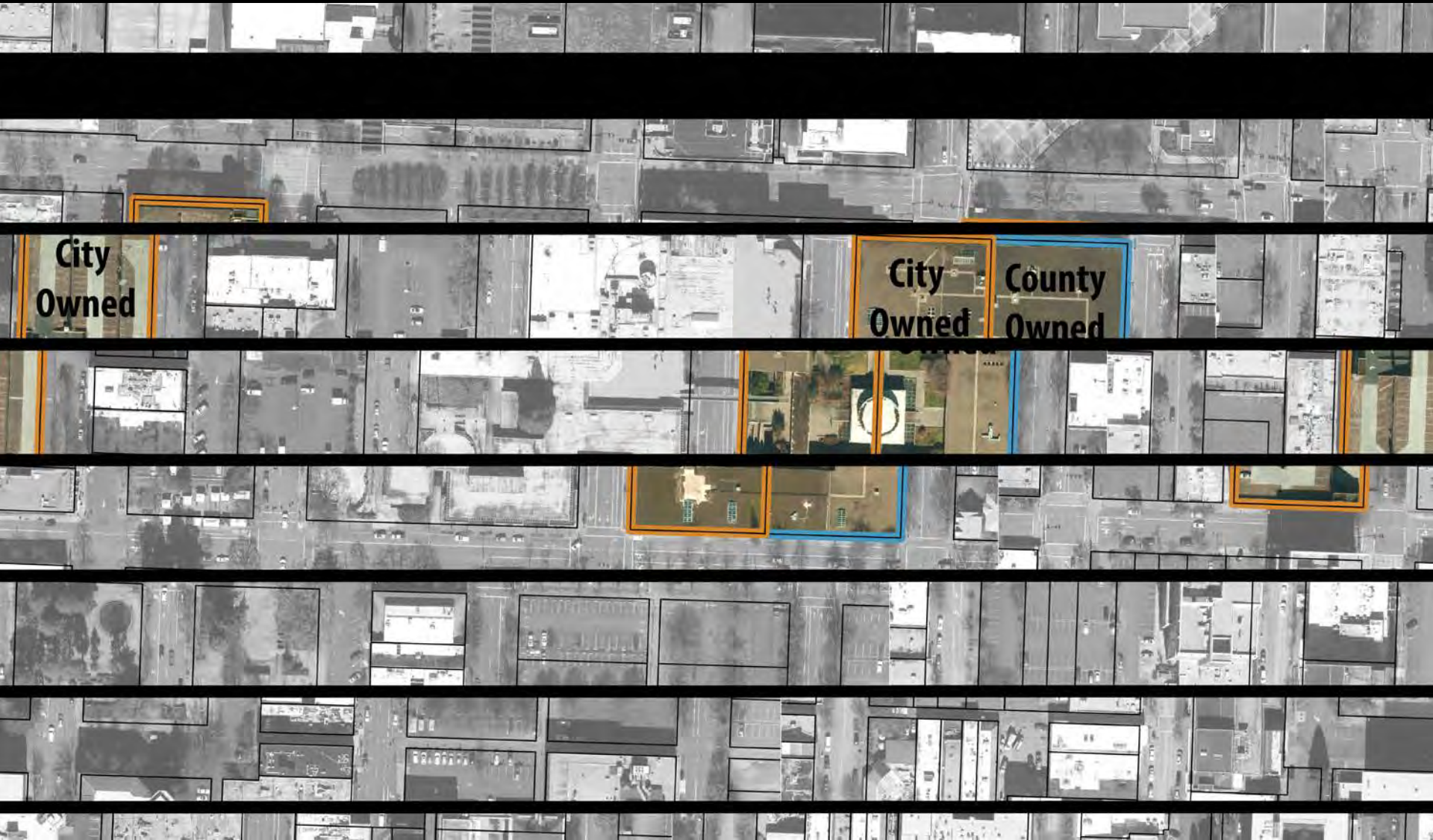


**County  
Owned**

**City  
Owned**







**City  
Owned**

**City  
Owned**

**County  
Owned**





# Master Plan



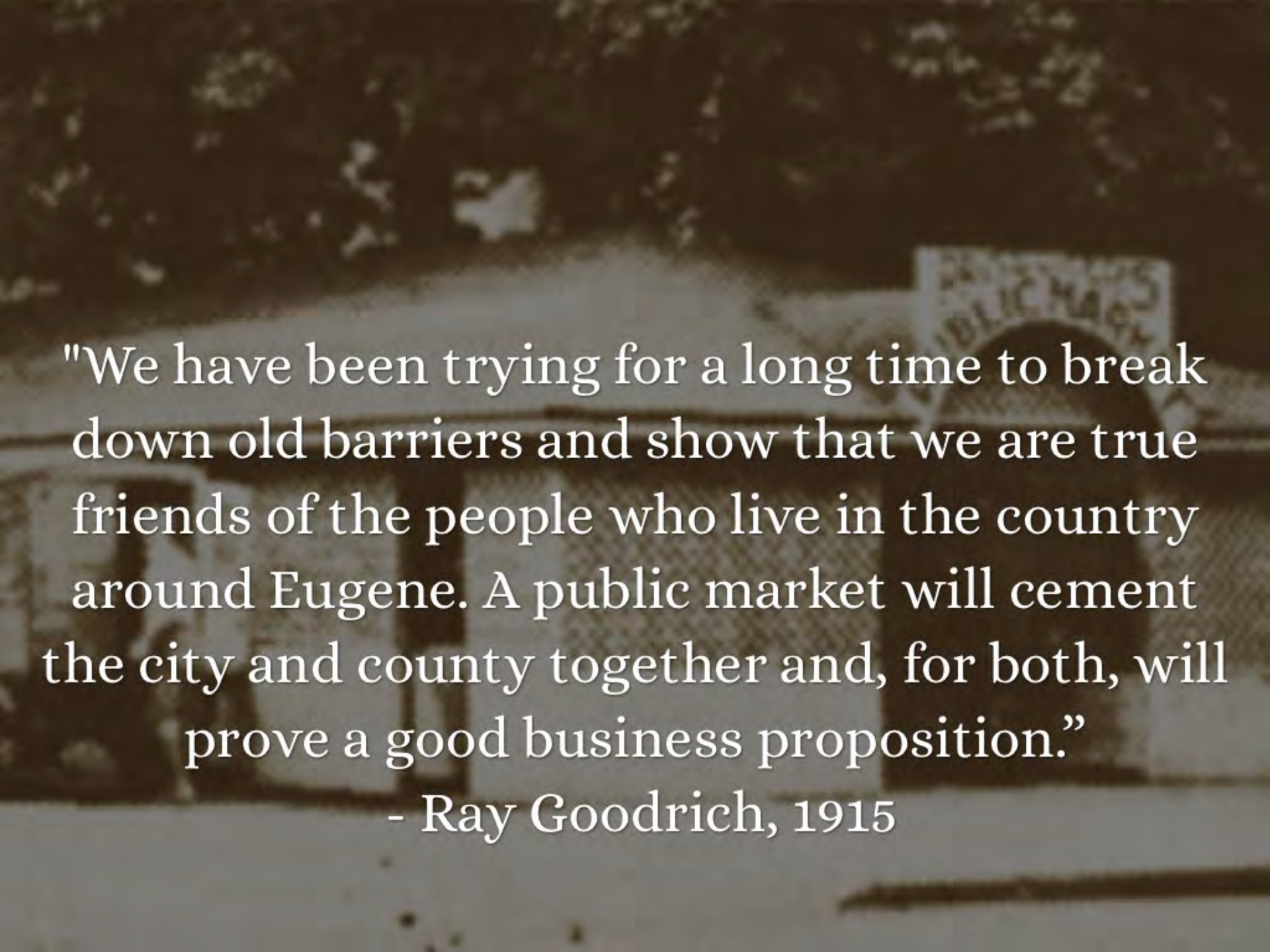


# NEXT STEPS

- Presentation to Council & Commissioners
- Develop proposed process, timeline, deal points
- Joint Public Hearing on concept





A faded, sepia-toned photograph of a building, likely a public market, with a sign that reads "PUBLIC MARKET". The image is the background for the text.

"We have been trying for a long time to break down old barriers and show that we are true friends of the people who live in the country around Eugene. A public market will cement the city and county together and, for both, will prove a good business proposition."

- Ray Goodrich, 1915



